

Accepted Manuscript

Review

Determinants of Fibrosis Progression and Regression in NASH

Detlef Schuppan, Rambabu Surabattula, Xiao Yu Wang

PII: S0168-8278(17)32435-2

DOI: <https://doi.org/10.1016/j.jhep.2017.11.012>

Reference: JHEPAT 6754

To appear in: *Journal of Hepatology*

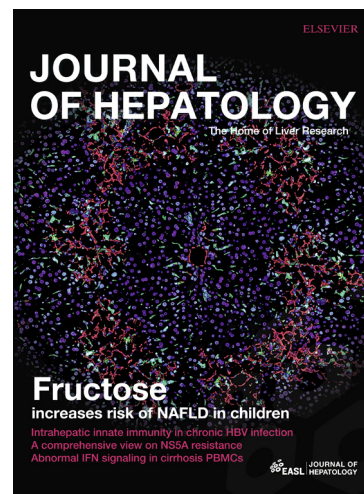
Received Date: 20 October 2017

Revised Date: 2 November 2017

Accepted Date: 9 November 2017

Please cite this article as: Schuppan, D., Surabattula, R., Wang, X.Y., Determinants of Fibrosis Progression and Regression in NASH, *Journal of Hepatology* (2017), doi: <https://doi.org/10.1016/j.jhep.2017.11.012>

This is a PDF file of an unedited manuscript that has been accepted for publication. As a service to our customers we are providing this early version of the manuscript. The manuscript will undergo copyediting, typesetting, and review of the resulting proof before it is published in its final form. Please note that during the production process errors may be discovered which could affect the content, and all legal disclaimers that apply to the journal pertain.



Determinants of Fibrosis Progression and Regression in NASH

Detlef Schuppan^{1,2}, Rambabu Surabattula¹, Xiao Yu Wang¹

¹Institute of Translational Immunology and Research Center for Immunotherapy; University of Mainz Medical Center, Mainz, Germany; ²Division of Gastroenterology, Beth Israel Deaconess Medical Center, Harvard Medical School, Boston, USA

Additional key words: Cirrhosis, chemokine, cholangiocyte, collagen, cytokine, fibroblast, fibrosis, integrin, lipoapoptosis, liver, macrophage, myofibroblast, progenitor cell, progression, regression, second hit, steatosis, stellate cell, therapy

Abbreviations: Cholangiocyte, ECM, extracellular matrix; HSC, hepatic stellate cell; MF, myofibroblast; MMP, matrix metalloproteinase; NAFL, non alcoholic fatty liver; NAFLD, nonalcoholic fatty liver disease; NASH, non alcoholic steatohepatitis; TGF β , transforming growth factor beta; TIMP, Tissue inhibitor of metalloproteinases.

Word count: 2129 Figures: 1 Tables: 1

Address for correspondence:

Detlef Schuppan, M.D., Ph.D.

Institute of Translational Immunology and Research Center for Immunotherapy

University Medical Center of the Johannes Gutenberg University Mainz

Langenbeckstraße 1, 55131 Mainz, Germany

Phone: +49 (0) 6131 17-7356 Fax: +49 (0) 6131 17-7357

e-mail: dschuppa@bidmc.harvard.edu

The authors declare no conflict of interest

Acknowledgements: The authors' studies related to this topic were supported by grants from the NIH, DFG, BMBF, and EU to DS.

Download English Version:

<https://daneshyari.com/en/article/8729345>

Download Persian Version:

<https://daneshyari.com/article/8729345>

[Daneshyari.com](https://daneshyari.com)