



Case report

Bevacizumab with metronomic chemotherapy of low-dose oral cyclophosphamide in recurrent cervical cancer: Four cases



Rose Isono-Nakata, Hiroshi Tsubamoto*, Tomoko Ueda, Kayo Inoue, Hiroaki Shibahara

Department of Obstetrics and Gynecology, Hyogo College of Medicine, Japan

ARTICLE INFO

Keywords:

Cervical cancer
Metronomic chemotherapy
Bevacizumab

ABSTRACT

Standard chemotherapy for women with advanced or recurrent cervical cancer involves a combination of paclitaxel, platinum, and bevacizumab. However, for patients who experience anaphylaxis in response to paclitaxel or platinum, have permanent peripheral neuropathy, or develop early recurrence or progressive disease during first-line chemotherapy, the development of a non-taxane non-platinum regimen is mandatory. Clinical trials using anti-angiogenic treatment demonstrated favorable outcomes in cases of highly vascularized cervical cancer. Metronomic chemotherapy has been considered an anti-angiogenic treatment, although its use in combination with bevacizumab has not been studied in cervical cancer. We treated four patients with recurrent cervical cancer with 50 mg of oral cyclophosphamide daily and 15 mg/kg of intravenous bevacizumab every 3 weeks (CFA-BEV). One patient experienced disease progression after 4 months, whereas the other three patients continued the regimen until their last follow-up at 13, 14, and 15 months, respectively. One patient suffered from grade 3 neutropenia; however, no grade 2 or higher non-hematological toxicities were observed. These cases demonstrate the use of CFA-BEV with minimal toxicity and expected anti-cancer activity and indicate that this regimen should be considered for second-line chemotherapy in advanced recurrent cervical cancer.

1. Introduction

Platinum-based chemotherapy has been a standard treatment for advanced or recurrent cervical cancer, and a combination regimen of paclitaxel, platinum, and bevacizumab (TP-BEV) is widely recognized as the current standard treatment (Tewari et al., 2017). However, some patients suffer from anaphylaxis after taxane- or platinum-based therapy. There is no standard treatment for progressive disease that develops during or shortly after platinum-based chemotherapy (Takekuma et al., 2017). Development of a non-taxane, non-platinum regimen for recurrent cervical cancer is therefore warranted.

Clinical trials using anti-angiogenic drugs, including bevacizumab and cediranib, for treatment of highly vascularized cervical cancer have demonstrated high efficacy (Symonds et al., 2015). Metronomic chemotherapy—which is described as frequent administration of low-dose chemotherapeutic drugs despite the maximum tolerated dose (MTD) therapy—has also demonstrated high clinical efficacy and only mild toxicities in patients with various cancers, which is likely due to inhibition of angiogenesis (Mpekris et al., 2017). The combination of metronomic chemotherapy with bevacizumab has been reported in several cancer types. For ovarian cancer, there have been six studies

that have reported the results of a regimen including 50 mg of oral cyclophosphamide (CFA) daily and 10 mg/kg of intravenous bevacizumab (BEV) repeated every 2 weeks. Alagkiozidis et al. reported 2 cases with endometrial cancer that were treated with 50 mg of oral CFA daily and 15 mg/kg of BEV repeated every 3 weeks. The two patients had a progression-free survival (PFS) of greater than 16 months, with prolonged quality of life (Alagkiozidis et al., 2015).

We treated four patients with recurrent cervical cancer with 50 mg of oral CFA daily and 15 mg/kg of BEV repeated every 3 weeks (CFA-BEV). Among three patients (cases 1, 2, and 4) who received salvage chemotherapy, case 2 had a PFS of 4.2 months and cases 1 and 4 continued treatment for more than 13 months without disease progression. One patient (case 3) continued the regimen as maintenance chemotherapy for more than 13 months after radiotherapy for metastases in the pubic region and surrounding soft tissues (Table 1). Written informed consent was obtained from all patients to publish their data in this case report.

* Corresponding author at: Department of Obstetrics and Gynecology, Hyogo College of Medicine, 1-1 Mukogawa -cho, Hyogo, Nishinomiya-shi 663-8501, Japan.
E-mail address: tsuba@hyo-med.ac.jp (H. Tsubamoto).

<https://doi.org/10.1016/j.gore.2018.04.001>

Received 6 February 2018; Received in revised form 31 March 2018; Accepted 2 April 2018

Available online 06 April 2018

2352-5789/ © 2018 The Authors. Published by Elsevier Inc. This is an open access article under the CC BY-NC-ND license (<http://creativecommons.org/licenses/by-nc-nd/4.0/>).

Table 1
Description of each case.

Case	Histology	Primary treatment	Treatment after recurrence	Baseline of CFA-BEV			Response of CFA-BEV	AEs of CFA-BEV CTCAE ver 4.0		Current status	
				Age (years)	PS	Moore criteria		PFS (months)	Non-hematologic		Hematologic
1	SCC	RH + CCRT	RT, anaphylaxis to platinum, UFT, TAE, RFA	73	0	1	low	15.2*	No	Grade 3 neutropenia	AWD
2	Adeno-SCC	CCRT	Surgery, RT	47	0	1	low	4.2	No	No	AWD
3	SCC	RH	RT, surgery, anaphylaxis to platinum	75	1	NA		12.8*	No	No	NED
4	SCC	RH + CCRT	Progression during platinum, RT, UFT	47	0	2	intermediate	13.8*	No	No	NED

Moore criteria included black race, performance status 1, pelvic disease, prior cisplatin, and a progression-free interval < 365 days. CFA-BEV, oral cyclophosphamide and bevacizumab; AEs, adverse events; CTCAE, Common Terminology Criteria for Adverse Events; PS, performance status; PFS, progression free survival; SCC, squamous cell carcinoma; RH, radical hysterectomy; CCRT, concurrent chemoradiotherapy; RT, radiotherapy; UFT, tegafur/uracil; TAE, trans-arterial embolization; RFA, radiofrequency ablation; NA, not available; AWD, alive with disease; NED, no evidence of disease.

* Denotes patients who continued to receive CFA-BEV until their last follow-up.

2. Case reports

2.1. Case 1

A 66-year-old woman was diagnosed with stage IB1 squamous cell carcinoma and underwent radical hysterectomy. The surgical specimen revealed pelvic lymph node metastases. Adjuvant concurrent chemoradiotherapy with weekly administration of 40 mg/m² cisplatin for 5 cycles was administered. Five years after first-line treatment, the patient was diagnosed with metastases in the left axillary lymph nodes. Following surgical resection, she received adjuvant radiotherapy to the field and received triweekly administration of 80 mg/m² nedaplatin for 2 cycles. She discontinued nedaplatin because of anaphylaxis and was administered tegafur/uracil for 7 months. At the age of 73 years, she was diagnosed with a solitary liver metastasis and multiple lung metastases. After transcatheter arterial chemoembolization and radiofrequency ablation for local control of liver metastasis, she continued to receive CFA-BEV. Computed tomography (CT) was conducted 5.2, 9.2, 11.3, and 14.8 months after treatment and revealed that her lung disease had stabilized (Fig. 1). During CFA-BEV treatment, she developed grade 3 neutropenia (950 cells/mm³) and grade 1 fatigue, and refrained from chemotherapy for one month after 10 months of treatment.

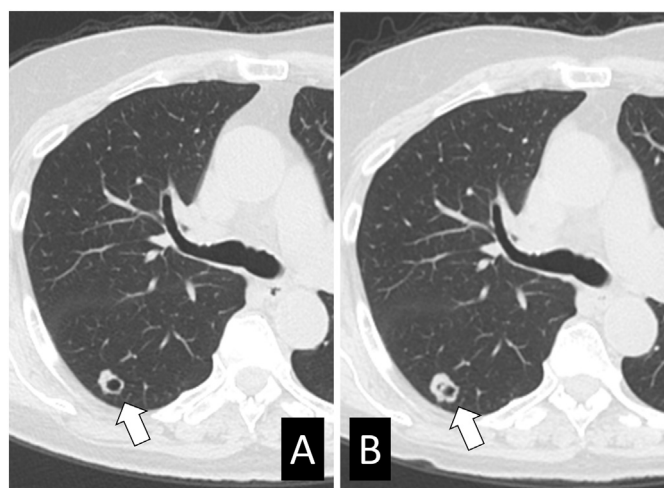


Fig. 1. Stable disease of lung metastases during CFA-BEV treatment in case 1. Images from computed tomography performed before (A) and 14.8 months after (B) the initiation of CFA-BEV treatment. The arrow shows the maximum size of the lung metastases (diameter, 10 mm).

2.2. Case 2

A 40-year-old woman was diagnosed with stage IIIB adenosquamous cell carcinoma. A computed tomography (CT) scan revealed pelvic and paraaortic lymph node metastases. She received extended-field radiotherapy with 80 mg/m² of nedaplatin every 3 weeks for 5 cycles. After 30 months, she underwent a thoracoscopic pulmonary upper lobectomy for right solitary lung metastasis. After 14 months, she received radiotherapy for Virchow metastasis. After 29 months, at the age of 47 years, she was diagnosed with multiple lymph node and lung metastases on 18F-fluoro-deoxyglucose (18-FDG) positron emission tomography (PET)-CT. She displayed no symptoms and rejected taxane-based chemotherapy owing to its side effect of alopecia. She was treated with CFA-BEV. After 2 months, PET-CT showed stable disease. She discontinued treatment because of onset of cough caused by progressive lung metastasis after 4.2 months of treatment. Following this, she agreed to receive a regimen of paclitaxel, carboplatin and bevacizumab, which resulted in partial response of lung metastases.

2.3. Case 3

A 66-year-old woman was diagnosed with stage IB1 squamous cell carcinoma. She received radical hysterectomy. Two years later, she received high-dose-rate intracavitary radiotherapy because of sustained evidence of the presence of malignant cells (class V) on vaginal wall cytology. After 6 months, she was diagnosed with left inguinal lymph node metastases; these were resected. Six months later, a recurrence in the anterior vaginal orifice and left inguinal lymph node metastases were identified. Resection of the urethra and vaginal wall, suprapubic cystostomy and left inguinal lymph node resection were conducted. Four years later, she experienced pelvic recurrence, therefore pelvic exenteration with urostomy, and colonostomy was performed. Eight months later, metastases in the pubic symphysis and the surrounding soft tissues were identified, for which concurrent chemoradiotherapy with nedaplatin was administered. She discontinued nedaplatin after 3 cycles because of anaphylaxis, by which point she was 75 years old. The patient continued to receive CFA-BEV. No evidence of recurrence was detected on CT after 11.9 months of treatment.

2.4. Case 4

A 45-year-old woman was transferred to our hospital because of massive vaginal bleeding. A cervical tumor 7 cm in diameter was identified, and stage IB2 squamous cell carcinoma was diagnosed.

Download English Version:

<https://daneshyari.com/en/article/8781008>

Download Persian Version:

<https://daneshyari.com/article/8781008>

[Daneshyari.com](https://daneshyari.com)