

Accepted Manuscript

Standardization of Radiation Therapy Dose for Locally-advanced Non-small Cell Lung Cancer through Changes to a Lung Cancer Clinical Pathway in Large, Integrated Comprehensive Cancer Center Network

Pooja Karukonda, Brian J. Gebhardt, Zachary D. Horne, Dwight E. Heron, Sushil Beriwal

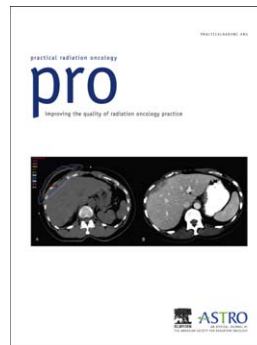
PII: S1879-8500(17)30197-2
DOI: doi: [10.1016/j.prro.2017.07.003](https://doi.org/10.1016/j.prro.2017.07.003)
Reference: PRRO 795

To appear in: *Practical Radiation Oncology*

Received date: 5 April 2017
Revised date: 25 June 2017
Accepted date: 3 July 2017

Please cite this article as: Karukonda Pooja, Gebhardt Brian J., Horne Zachary D., Heron Dwight E., Beriwal Sushil, Standardization of Radiation Therapy Dose for Locally-advanced Non-small Cell Lung Cancer through Changes to a Lung Cancer Clinical Pathway in Large, Integrated Comprehensive Cancer Center Network, *Practical Radiation Oncology* (2017), doi: [10.1016/j.prro.2017.07.003](https://doi.org/10.1016/j.prro.2017.07.003)

This is a PDF file of an unedited manuscript that has been accepted for publication. As a service to our customers we are providing this early version of the manuscript. The manuscript will undergo copyediting, typesetting, and review of the resulting proof before it is published in its final form. Please note that during the production process errors may be discovered which could affect the content, and all legal disclaimers that apply to the journal pertain.



Standardization of Radiation Therapy Dose for Locally-advanced Non-small Cell Lung Cancer through Changes to a Lung Cancer Clinical Pathway in Large, Integrated Comprehensive Cancer Center Network

Pooja Karukonda, BA¹, Brian J. Gebhardt, MD², Zachary D. Horne, MD², Dwight E. Heron, MD, MBA, FACRO, FACR², and Sushil Beriwal, MD²

¹*University of Pittsburgh School of Medicine, Pittsburgh, PA, USA,* ²*Department of Radiation Oncology, University of Pittsburgh Cancer Institute, Pittsburgh, PA, USA,*

Running title: Lung cancer clinical pathway

NUMBER OF TABLES: 3

NUMBER OF FIGURES: 2

Keywords: Clinical pathways, chemoradiotherapy, non-small cell lung cancer

Corresponding Author:

Sushil Beriwal, M.D.
300 Halket St.
Pittsburgh, PA 15312
Tel: 412-641-4600
E-mail: beriwal@upmc.edu

CONFLICTS OF INTEREST NOTIFICATION

Via Oncology is an affiliated company of UPMC and the University of Pittsburgh Cancer Institute

Download English Version:

<https://daneshyari.com/en/article/8789380>

Download Persian Version:

<https://daneshyari.com/article/8789380>

[Daneshyari.com](https://daneshyari.com)