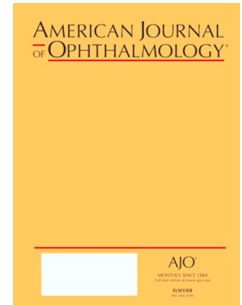


Accepted Manuscript

Systemic Disease and Long-term Intraocular Pressure Mean, Peak and Variability in Non- Glaucomatous Eyes

Mark S. Dikopf, Thasarat S. Vajaranant, Charlotte E. Joslin



PII: S0002-9394(18)30325-8

DOI: [10.1016/j.ajo.2018.06.021](https://doi.org/10.1016/j.ajo.2018.06.021)

Reference: AJOPHT 10567

To appear in: *American Journal of Ophthalmology*

Received Date: 11 April 2018

Revised Date: 26 June 2018

Accepted Date: 28 June 2018

Please cite this article as: Dikopf MS, Vajaranant TS, Joslin CE, Systemic Disease and Long-term Intraocular Pressure Mean, Peak and Variability in Non- Glaucomatous Eyes, *American Journal of Ophthalmology* (2018), doi: 10.1016/j.ajo.2018.06.021.

This is a PDF file of an unedited manuscript that has been accepted for publication. As a service to our customers we are providing this early version of the manuscript. The manuscript will undergo copyediting, typesetting, and review of the resulting proof before it is published in its final form. Please note that during the production process errors may be discovered which could affect the content, and all legal disclaimers that apply to the journal pertain.

Systemic Disease and Long-term Intraocular Pressure Mean, Peak and Variability in Non-Glaucomatous Eyes**Mark S. Dikopf,¹ Thasarat S. Vajaranant,¹ Charlotte E. Joslin^{1,2}**¹Department of Ophthalmology and Visual Sciences, University of Illinois at Chicago, Chicago, IL²Division of Epidemiology and Biostatistics, School of Public Health, University of Illinois at Chicago, Chicago, IL, United States

Meeting Presentation: A portion of this manuscript was presented at the Annual Meeting of the Association for Research in Vision and Ophthalmology (ARVO) 2013

Financial Support:

Research to Prevent Blindness, Inc.; NIH/NEI P30EY01792; NIH/NCMHD P60 MD003424 (CEJ)
NIH/NEI K23EY022949 (TSV).

Funding support for AREDS was provided by the National Eye Institute (N01-EY- 0-2127).

Conflict of Interest Disclosures:

MSD: no conflicts of interest to disclose

TSV: no conflicts of interest to disclose

CEJ: no conflicts of interest to disclose

Running Head: Systemic Disease and Longitudinal IOP Mean, Peak, Variability

Correspondence:

Charlotte E. Joslin, OD, PhD
Illinois Eye and Ear Infirmary
Associate Professor, Department of Ophthalmology and Visual Science
Departmental Affiliate, Division of Epidemiology and Biostatistics
University of Illinois at Chicago
1855 W. Taylor St., Suite 3.154
Chicago, IL 60612
312-996- 5410
312-996- 4255 fax
charjosl@uic.edu

Download English Version:

<https://daneshyari.com/en/article/8790475>

Download Persian Version:

<https://daneshyari.com/article/8790475>

[Daneshyari.com](https://daneshyari.com)