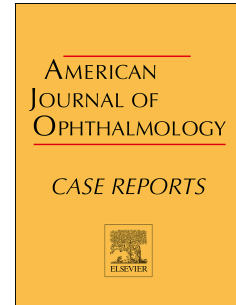


# Accepted Manuscript

Pathologic study of early manifestations of polypoidal choroidal vasculopathy and pathogenesis of choroidal neo-vascularization

Mark O.M. Tso, Maria J. Suarez, Charles G. Eberhart



PII: S2451-9936(16)30215-8

DOI: [10.1016/j.ajoc.2017.10.012](https://doi.org/10.1016/j.ajoc.2017.10.012)

Reference: AJOC 191

To appear in: *American Journal of Ophthalmology Case Reports*

Received Date: 21 September 2016

Revised Date: 3 August 2017

Accepted Date: 2 October 2017

Please cite this article as: M.O.M. Tso, M.J. Suarez, C.G. Eberhart, Pathologic study of early manifestations of polypoidal choroidal vasculopathy and pathogenesis of choroidal neo-vascularization, *American Journal of Ophthalmology Case Reports* (2017), doi: 10.1016/j.ajoc.2017.10.012.

This is a PDF file of an unedited manuscript that has been accepted for publication. As a service to our customers we are providing this early version of the manuscript. The manuscript will undergo copyediting, typesetting, and review of the resulting proof before it is published in its final form. Please note that during the production process errors may be discovered which could affect the content, and all legal disclaimers that apply to the journal pertain.

# Pathologic Study of Early Manifestations of Polypoidal Choroidal Vasculopathy and Pathogenesis of Choroidal Neo-Vascularization

Authors: Mark OM Tso, Maria J. Suarez, Charles G. Eberhart

Wilmer Eye Institute  
Johns Hopkins University, School of Medicine,  
Smith Research Building, Room 4035,  
400 North Broadway Street, Baltimore, MD 21287

Corresponding Author: Mark OM Tso, Wilmer Eye Institute,  
Smith Research Building, Room 4035  
400 North Broadway, Baltimore, MD 21287,  
Phone Number: 410-614-0229,  
Fax Number: 410-614-1114,  
Email Address: [matso@jhmi.edu](mailto:matso@jhmi.edu)

Download English Version:

<https://daneshyari.com/en/article/8790952>

Download Persian Version:

<https://daneshyari.com/article/8790952>

[Daneshyari.com](https://daneshyari.com)