

# Accepted Manuscript

Neural control of choroidal blood flow

Anton Reiner, Malinda E.C. Fitzgerald, Nobel Del Mar, Chunyan Li

PII: S1350-9462(17)30077-0

DOI: [10.1016/j.preteyeres.2017.12.001](https://doi.org/10.1016/j.preteyeres.2017.12.001)

Reference: JPRR 699

To appear in: *Progress in Retinal and Eye Research*

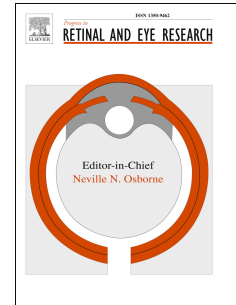
Received Date: 2 August 2017

Revised Date: 28 November 2017

Accepted Date: 1 December 2017

Please cite this article as: Reiner, A., Fitzgerald, M.E.C., Del Mar, N., Li, C., Neural control of choroidal blood flow, *Progress in Retinal and Eye Research* (2018), doi: 10.1016/j.preteyeres.2017.12.001.

This is a PDF file of an unedited manuscript that has been accepted for publication. As a service to our customers we are providing this early version of the manuscript. The manuscript will undergo copyediting, typesetting, and review of the resulting proof before it is published in its final form. Please note that during the production process errors may be discovered which could affect the content, and all legal disclaimers that apply to the journal pertain.



**Neural Control of Choroidal Blood Flow**

By

Anton Reiner<sup>1,2</sup>, Malinda E.C. Fitzgerald<sup>1,2,3</sup>, Nobel Del Mar<sup>1</sup>, and Chunyan Li<sup>1</sup><sup>1</sup>Department of Anatomy & Neurobiology<sup>2</sup>Department of Ophthalmology

University of Tennessee

855 Monroe Ave.

Memphis, TN 38163

<sup>3</sup>Department of Biology

Christian Brothers University

Memphis, TN

**Running Title:** Choroidal Blood Flow Control**Pages:** 85**Tables:** 1**Figures:** 23**Corresponding Author:**

Dr. Anton Reiner

Department of Anatomy &amp; Neurobiology

University of Tennessee Health Science Center

855 Monroe Ave.

Memphis, TN 38163

office: 901-448-8298

fax: 901-448-7193

e-mail: [areiner@uthsc.edu](mailto:areiner@uthsc.edu)

Download English Version:

<https://daneshyari.com/en/article/8795018>

Download Persian Version:

<https://daneshyari.com/article/8795018>

[Daneshyari.com](https://daneshyari.com)