

# Accepted Manuscript

Connexin channel and its role in diabetic retinopathy

Sayon Roy, Jean X. Jiang, An-Fei Li, Dongjoon Kim

PII: S1350-9462(17)30015-0

DOI: [10.1016/j.preteyeres.2017.06.001](https://doi.org/10.1016/j.preteyeres.2017.06.001)

Reference: JPRR 674

To appear in: *Progress in Retinal and Eye Research*

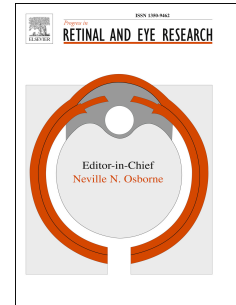
Received Date: 5 February 2017

Revised Date: 30 May 2017

Accepted Date: 2 June 2017

Please cite this article as: Roy, S., Jiang, J.X., Li, A.-F., Kim, D., Connexin channel and its role in diabetic retinopathy, *Progress in Retinal and Eye Research* (2017), doi: 10.1016/j.preteyeres.2017.06.001.

This is a PDF file of an unedited manuscript that has been accepted for publication. As a service to our customers we are providing this early version of the manuscript. The manuscript will undergo copyediting, typesetting, and review of the resulting proof before it is published in its final form. Please note that during the production process errors may be discovered which could affect the content, and all legal disclaimers that apply to the journal pertain.



**Title: Connexin Channel and its Role in Diabetic Retinopathy****Authors:** Sayon Roy<sup>a</sup>, Jean X. Jiang<sup>b</sup>, An-Fei Li<sup>c</sup>, and Dongjoon Kim<sup>a</sup>**Affiliation:** <sup>a</sup>Departments of Medicine and Ophthalmology, Boston University School of Medicine, Boston, Massachusetts; <sup>b</sup>Department of Biochemistry and Structural Biology, University of Texas Health Science Center, San Antonio, Texas; <sup>c</sup>Department of Ophthalmology, Taipei Veterans General Hospital and National Yang-Ming University, Taipei, Taiwan**Corresponding author:** Sayon Roy, Ph.D., 650 Albany Street. Departments of Medicine and Ophthalmology, Boston University School of Medicine. (617) 638-4110, Email: [sayon@bu.edu](mailto:sayon@bu.edu)

Download English Version:

<https://daneshyari.com/en/article/8795050>

Download Persian Version:

<https://daneshyari.com/article/8795050>

[Daneshyari.com](https://daneshyari.com)