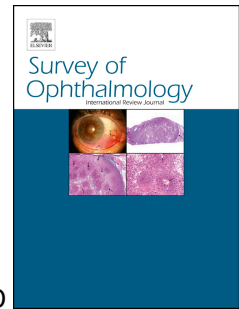


# Accepted Manuscript

Why does acute primary angle closure happen? Potential risk factors for acute primary angle closure.

Xiulan Zhang, MD, PhD, Yaoming Liu, MD, Wei Wang, MD, Shida Chen, MD, Fei Li, MD, Wenbin Huang, MD, Tin Aung, MBBS, PhD, FRCS(Edin), Ningli Wang, MD, PhD



PII: S0039-6257(16)30269-7

DOI: [10.1016/j.survophthal.2017.04.002](https://doi.org/10.1016/j.survophthal.2017.04.002)

Reference: SOP 6717

To appear in: *Survey of Ophthalmology*

Received Date: 11 December 2016

Revised Date: 4 April 2017

Accepted Date: 10 April 2017

Please cite this article as: Zhang X, Liu Y, Wang W, Chen S, Li F, Huang W, Aung T, Wang N, Why does acute primary angle closure happen? Potential risk factors for acute primary angle closure., *Survey of Ophthalmology* (2017), doi: 10.1016/j.survophthal.2017.04.002.

This is a PDF file of an unedited manuscript that has been accepted for publication. As a service to our customers we are providing this early version of the manuscript. The manuscript will undergo copyediting, typesetting, and review of the resulting proof before it is published in its final form. Please note that during the production process errors may be discovered which could affect the content, and all legal disclaimers that apply to the journal pertain.

# Why does acute primary angle closure happen? Potential risk factors for acute primary angle closure.

*Xiulan Zhang, MD, PhD<sup>a\*</sup>, Yaoming Liu, MD<sup>a</sup>, Wei Wang, MD<sup>a</sup>, Shida Chen, MD<sup>a</sup>, Fei Li, MD<sup>a</sup>, Wenbin Huang, MD<sup>a</sup>, Tin Aung, MBBS, PhD, FRCS(Edin)<sup>b</sup>, Ningli Wang, MD, PhD<sup>c</sup>*

<sup>a</sup> Zhongshan Ophthalmic Center, State Key Laboratory of Ophthalmology, Sun Yat-Sen University, Guangzhou, China

<sup>b</sup> Singapore Eye Research Institute and Singapore National Eye Centre, Singapore; Department of Ophthalmology, National University of Singapore, Singapore

<sup>c</sup> Department of Ophthalmology, Beijing Tongren Hospital, Capital Medical University, Beijing, China.

\* Corresponding author: Xiulan Zhang, MD, PhD, Zhongshan Ophthalmic Center, State Key Laboratory of Ophthalmology, Sun Yat-Sen University, 54S. Xianlie Road, Guangzhou 510060, China.

E-mail address: zhangxl2@mail.sysu.edu.cn.

## Abstract

Acute primary angle closure (APAC) is an ocular emergency and requires immediate management to avoid blindness. Narrow anterior chamber angle, advanced age, female gender, and Asian ethnic background are considered risk factors for APAC. The predictable power of these factors is, however, relatively poor, and many questions remain unanswered because only a relatively small proportion of anatomically predisposed eyes eventually develop APAC. We summarize the potential roles of various factors in the pathogenesis of APAC.

**Keywords:** glaucoma, acute primary angle closure, pathogenesis, anatomic factor, nonanatomic factor

Download English Version:

<https://daneshyari.com/en/article/8795232>

Download Persian Version:

<https://daneshyari.com/article/8795232>

[Daneshyari.com](https://daneshyari.com)