

Available online at www.sciencedirect.com

journal homepage: <http://Elsevier.com/locate/radcr>

Oncology

Rare case of male breast intraductal papilloma progressing to invasive ductal carcinoma: A radiologic-pathologic correlation

Gaurav Anand BLA*, Nabil Al-Khalisi MD, MPH, Dauod Arif MD, Soheila Hamidpour MD, Tiffany Lewis DO, MBA

Department of Radiology, Truman Medical Center, University of Missouri–Kansas City School of Medicine, 2301 Holmes St, Kansas City, MO 64108, USA

ARTICLE INFO

Article history:

Received 28 December 2017

Accepted 22 February 2018

Available online 23 March 2018

Keywords:

Breast cancer

Intraductal papilloma

Ductal carcinoma

ABSTRACT

Although male breast cancer represents only 0.5%–1% of all breast cancer cases in the United States, the incidence of this disease is slowly rising [1]. Because of its extremely low prevalence, screening and treatment guidelines are not well established. Thus, analyzing cases of male breast cancer can accelerate this process. We present a case of a 52-year-old man, initially diagnosed with biopsy-confirmed intraductal papilloma without atypia, who presented 3 years later with progression of this benign lesion to ductal carcinoma in situ and development of de novo invasive ductal carcinoma. This report stresses the importance of symptom detection and risk factor modification with the goal of decreasing the incidence of this disease.

© 2018 the Authors. Published by Elsevier Inc. under copyright license from the University of Washington. This is an open access article under the CC BY-NC-ND license (<http://creativecommons.org/licenses/by-nc-nd/4.0/>).

Background

Because male breast cancer (MBC) is a rare disease, with less than 2500 new cases diagnosed each year, there is relatively little known about its etiology, risk factors, and prognosis compared with female breast cancer [2]. As a result, individual case reports are helpful in providing the epidemiologic data required to elucidate these important characteristics. This information is also useful to determine a diagnosis from a constellation of symptoms that seems to fit a certain disease but when laboratory results do not align.

We describe a case in a male patient of a benign breast mass that progressed to ductal carcinoma in situ and the

development of invasive ductal carcinoma (IDC) alongside this lesion. We also discuss risk factor modification and accepted treatments for MBC.

Case presentation

A 52-year-old African American man presented to his primary care physician in October 2014 due to nipple pain and discharge. The patient reported intermittent, expressible reddish brown discharge from the right nipple since 2011. Occasionally, a palpable lump was noticed with associated pain, but no erythema or dimpling was present. He denied trauma to the area and reported no recent weight loss.

Competing Interests: The authors have declared that no competing interests exist.

* Corresponding author.

E-mail address: gaurav.anand@mail.umkc.edu (G. Anand).

<https://doi.org/10.1016/j.radcr.2018.02.021>

1930-0433/© 2018 the Authors. Published by Elsevier Inc. under copyright license from the University of Washington. This is an open access article under the CC BY-NC-ND license (<http://creativecommons.org/licenses/by-nc-nd/4.0/>).

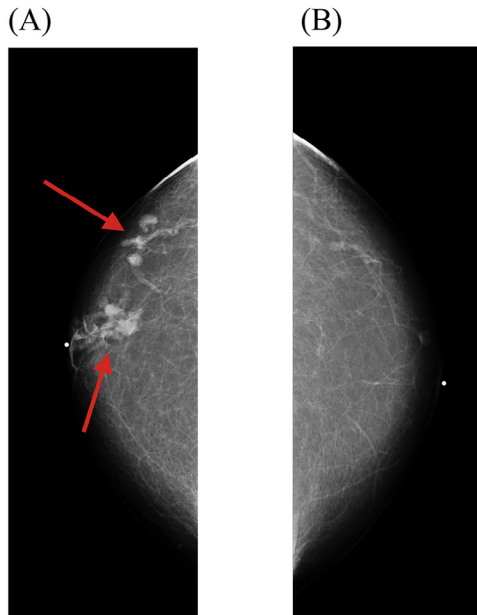


Fig. 1 – (A) Craniocaudal mammogram of the right breast demonstrating masses. (B) No suspicious abnormalities are noted in the left breast.

The patient's medical history included hypertension, hyperlipidemia, atrial fibrillation, and morbid obesity. His family history was significant because of a prolactinoma diagnosed in his sister. Serum thyroid stimulating hormone, free T4, and prolactin levels were normal, and liver and kidney functions were also normal.

Mammography and ultrasonography revealed areas of duct ectasia with 2 intraductal masses in the right breast and a mildly prominent right axillary node (Fig. 1). Several ultrasound-guided core needle biopsies were obtained from each lesion using an 18-gauge needle (Fig. 2). Pathologic examination of both masses revealed intraductal papillomas with microcalcifications. Same-day biopsy of the prominent lymph node showed reactive lymphoid tissue without malignancy.

His pain was managed conservatively with non-steroidal anti-inflammatory drugs (NSAIDs) and he was scheduled for routine follow-up appointments with our breast and primary care clinics.

Three years after this benign biopsy, the patient noticed enlargement of the palpable lumps and a change in color of the nipple discharge to dark brown. An ultrasound was ordered, which showed interval growth of the intraductal masses along with abnormal-appearing right axillary lymph nodes (Fig. 3). An excisional biopsy revealed estrogen receptor- and progesterone receptor-positive, human epidermal growth factor receptor 2-negative invasive ductal carcinoma (Figs. 4 and 5).

In November 2017, the patient underwent a right simple mastectomy, which revealed intermediate grade ductal carcinoma in situ. Biopsies of right axillary sentinel lymph nodes were negative for malignancy. The patient was referred to our hematology or oncology clinic, and hormonal therapy with tamoxifen was started.

Discussion

Invasive ductal carcinoma represents approximately 90% of new MBC diagnoses, whereas lobular carcinoma accounts for 1.5% of cases [3]. The most common presenting symptom is a palpable breast mass, which may be accompanied by nipple discharge, lymphadenopathy, or surrounding skin changes [4]. Imaging evaluation of MBC in men is identical to that in women, utilizing the breast imaging-reporting and data system (BI-RADS), and staging similarly using the Tumor, Node, Metastasis (TNM) staging system for breast cancer.

Careful examination was performed in both the IDC and ductal carcinoma in situ. Based on their histologic appearances, we believe the former malignant neoplasm developed de novo and the latter lesion developed from the original intraductal papilloma. Both intraductal masses found on the initial core biopsy were also adequately sampled and compared.

Following the core biopsy, the histologic diagnosis of benign intraductal papilloma was discordant with radiology since the

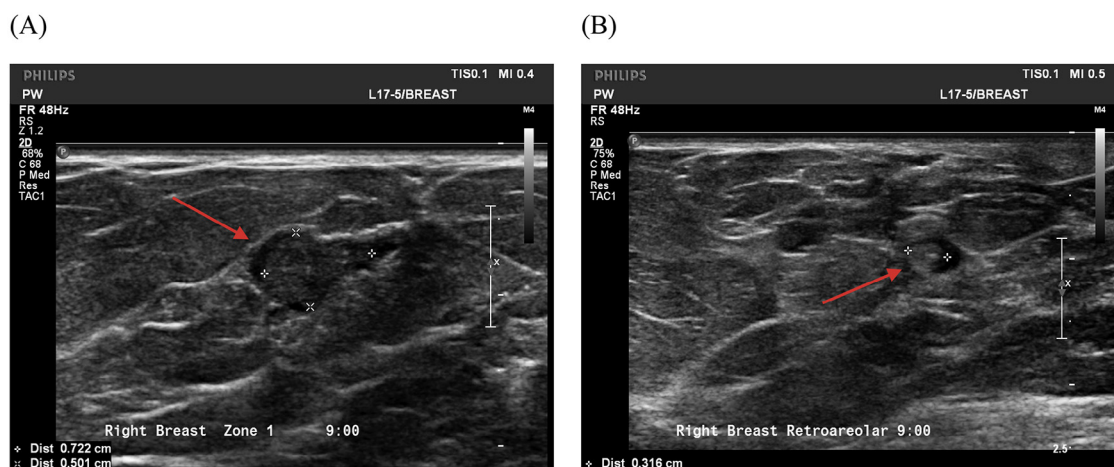


Fig. 2 – Right breast ultrasound images demonstrating (A) a 7 mm solid intraductal mass and (B) a 3 mm hyperechoic mass. Both lesions were located at the 9-o'clock position.

Download English Version:

<https://daneshyari.com/en/article/8825055>

Download Persian Version:

<https://daneshyari.com/article/8825055>

[Daneshyari.com](https://daneshyari.com)