

Available online at www.sciencedirect.com

ScienceDirect

journal homepage: <http://Elsevier.com/locate/radcr>

Gastrointestinal

Mucinous carcinoma of the gallbladder with signet ring cells

Takeshi Fukuda MD^{a,*}, Yoshihiro Sakimoto MD^a, Kenichi Narita MD^a,
Mitsuko Ariizumi MD, PhD^a, Yoshio Aizawa MD, PhD^b, Kunihiro Fukuda MD, PhD^c

^a Department of Radiology, The Jikei University Katsushika Medical Center, 6-41-2 Aoto, Katsushika-ku, Tokyo 125-8506, Japan

^b Department of Gastroenterology and Hepatology, The Jikei University Katsushika Medical Center, 6-41-2 Aoto, Katsushika-ku, Tokyo 125-8506, Japan

^c Department of Radiology, The Jikei University School of Medicine, 3-19-18 Nishishinbashi, Minato-Ku, Tokyo 105-8471, Japan

ARTICLE INFO

Article history:

Received 4 January 2017

Received in revised form 12 June 2017

Accepted 26 June 2017

Available online

Keywords:

Gallbladder carcinoma

Mucinous carcinoma

Signet ring cell

Calcification

ABSTRACT

Most gallbladder carcinomas are adenocarcinomas, of which mucinous carcinoma (MC) is a rare pathologic subtype. Signet ring cells are seldom found in MCs. We report an extremely rare case of gallbladder MC with signet ring cells. This is the first radiological case report about this rare type of histologic entity with detailed discussion of imaging findings in the English literature. In addition to the features of MC, linitis plastica-like invasion, which is the key feature of signet ring cells, was confirmed by both imaging and histopathologic analysis. Furthermore, radiologists should know how the imaging findings of MC differ from those of other major subtypes of adenocarcinoma, as there is a risk of delays in diagnosis and underestimation of tumor spread.

© 2017 the Authors. Published by Elsevier Inc. under copyright license from the University of Washington. This is an open access article under the CC BY-NC-ND license (<http://creativecommons.org/licenses/by-nc-nd/4.0/>).

Introduction

Gallbladder carcinoma is the most common type of tumor of the biliary tract, and adenocarcinoma is its dominant histologic type. Mucinous carcinoma (MC) is a rare pathologic subtype of adenocarcinoma, with stromal mucin deposition constituting >50% of the tumor necessary for its diagnosis [1]. MC accompanied by signet ring cells is extremely rare. The prognosis of patients with MC is considered to be very poor if poorly differentiated signet ring cells are dominant [2]. Radiological investigations are valuable for diagnosis of gallbladder carcinoma, but no previous

reports in the English literature have discussed the details of imaging gallbladder MC with signet ring cells.

Case report

A 70-year-old woman with early-stage bladder cancer underwent a computed tomography (CT) examination for metastatic workup. There was local wall thickening in the fundal portion of the gallbladder and nodular calcification, which we suspected as being fundal-type adenomyomatosis and a gallbladder

* Corresponding author.

E-mail address: takeshi.fukuda616@gmail.com (T. Fukuda).

<https://doi.org/10.1016/j.radcr.2017.06.016>

1930-0433/© 2017 the Authors. Published by Elsevier Inc. under copyright license from the University of Washington. This is an open access article under the CC BY-NC-ND license (<http://creativecommons.org/licenses/by-nc-nd/4.0/>).

stone. Cystectomy was performed without any adverse events. Eleven months after imaging, although the patient had no symptoms or abnormal physical findings, a blood test revealed elevated levels of aspartate aminotransferase (95 IU/L), alanine aminotransferase (89 IU/L), alkaline phosphatase (2209 IU/L), and γ -glutamyl transpeptidase (587 IU/L).

Abdominal sonography showed a dilated intrahepatic biliary tract and calcification of the gallbladder wall. As a result of the calcification, it was not possible to observe the structure of the wall or the inside of the gallbladder. Dynamic contrast-enhanced CT revealed bilateral intrahepatic bile duct dilatation and remarkable calcification along the gallbladder wall. Although no obvious enhanced lesion was present in the gallbladder, a low-density nodule with slight calcification in the adjacent liver parenchyma suggested direct invasion by a gallbladder lesion (Fig. 1). There was a low-attenuating lobulated mass with calcification in the porta hepatis and parapancreatic head area that was similar to the gallbladder lesion; lymph node metastasis was suspected (Fig. 2). T2-weighted imaging (T2WI) showed a hypointense, thickened gallbladder wall, consistent with calcification; the gallbladder lumen was hypointense-isointense on T1-weighted imaging (T1WI) and exhibited a heterogeneous hyperintensity on T2WI (Fig. 3A and B). Diffusion-weighted imaging showed that the lesion had a heterogeneous hyperintensity (Fig. 3C). Lymph node metastasis also showed as a hypointensity and hyperintensity on T1WI and T2WI, respectively.

Fine-needle aspiration biopsy was performed on the parapancreatic head lymph nodes, and signet ring cells were revealed. Although chemotherapy was initiated, the side effects were too severe for continuation of the regimen. Five months later, a CT scan revealed tumor invasion extending into the hepatic parenchyma and spread along biliary tract (Fig. 4). Peritonitis carcinomatosa was also revealed by CT. The patient died a few days after the final CT examination, and an autopsy was performed.

On macroscopic examination, the gallbladder was stiff and strongly adherent to the liver. The gallbladder lumen was occupied by a yellowish tumor, which had directly invaded the liver parenchyma. Tumor invasion was also found along the biliary tract (Fig. 5A). The microscopic structure of the gallbladder wall was destroyed by tumor invasion, and thick calcification was present. The tumor mainly consisted of abundant mucin and necrotic tissue, with tumor stroma spreading as a lattice structure, consistent with MC. Signet ring cells were evident and appeared to be floating in the mucous lake (Fig. 5B and C).

Discussion

The most common histologic type of gallbladder carcinoma is adenocarcinoma, which comprises 90% of all gallbladder carcinomas [3]. There are several histopathologic variants of adenocarcinoma, including the papillary, mucinous, squamous, and adenosquamous subtypes. Recent reports have indicated that MC is rare, comprising only 2.5%-5.5% of gallbladder carcinomas [3-5]. Stromal mucin deposition constituting >50% of the tumor is necessary for a diagnosis of MC [1]. Recently, the

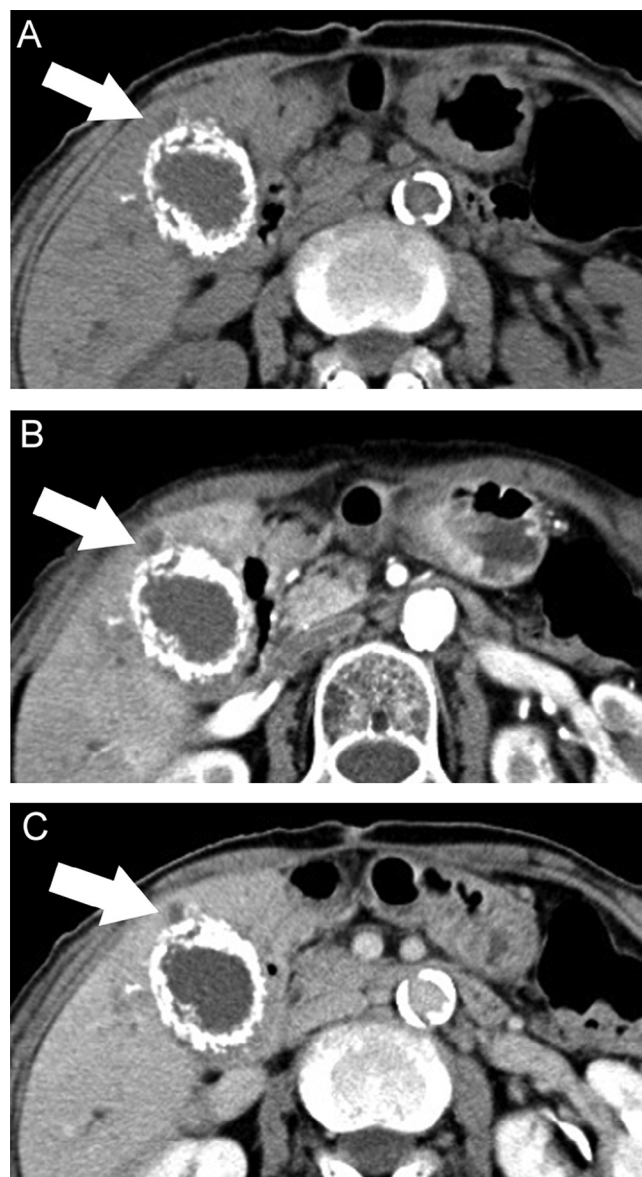


Fig. 1 – Dynamic contrast-enhanced computed tomography (CT) at the level of the gallbladder body: precontrast (A), early phase (B), and delayed phase (C). Thick calcification is found along the gallbladder wall. There are no obvious enhanced lesions, but a small low-density area in adjacent liver parenchyma suggests direct tumor invasion (arrows).

prevalence of signet ring cells among MC case has been reported as 33% [4]. Therefore, the present case is extremely rare pathologically. The prognosis of patients with MC is very poor if poorly differentiated signet ring cells are dominant [2]. There are no previous reports in the English literature on the details of imaging MC with signet ring cells.

Previous studies of MC have mainly been case reports, and imaging findings have varied [6-14]. Abdominal sonography has shown the tumor as a heterogeneous echogenic mass that results from calcification, necrosis, and the mucinous component. CT examination has shown focal or diffuse gallbladder wall thickness with water-like attenuation, reflecting the presence of mucin and necrosis. This finding is close to the

Download English Version:

<https://daneshyari.com/en/article/8825272>

Download Persian Version:

<https://daneshyari.com/article/8825272>

[Daneshyari.com](https://daneshyari.com)