

Available online at www.sciencedirect.com

ScienceDirect

journal homepage: <http://Elsevier.com/locate/radcr>

Case Report

Clinically significant anatomical variation of the retropharyngeal internal carotid arteries

Jaskirat K. Gill MD^{a,b,*}, Mehrin Sadiq MD^a, Zain Badar MD^a, Sajeev Ezhapilli MD^a^a SUNY Upstate Medical Center, Syracuse, NY^b Aventura Hospital and Medical Center, Aventura, FL

ARTICLE INFO

Article history:

Received 9 November 2016

Received in revised form

24 May 2017

Accepted 25 May 2017

Available online xxx

Keywords:

Carotid artery

Retropharyngeal

Pharynx

Anatomical variation

ABSTRACT

Although interpatient variations in the course and anatomy of extracranial internal carotid arteries (EICAs) have been described previously, inpatient variability is rarely cited in the literature. Distance between EICAs and the pharyngeal wall is an important determinant of vascular injury risk. A retropharyngeal EICA has crucial implications in patients undergoing pharyngeal procedures, and important in otorhinolaryngology and emergency medicine. Surgical exploration without identification of anatomical landmarks, or emergent intubation in the emergency room poses high risk for EICA injury. Other critical clinical considerations include intra-arterial involvement of tonsillitis, peritonsillar abscesses, or parapharyngeal neoplasms due to close proximity to the EICA.

We present 2 cases with short-term change in retropharyngeal course of EICA to highlight this further. Although no clear etiology for these changes has been identified, we hypothesize that embryology, weight alterations, atherosclerotic disease, and postradiation changes are contributory. Thus, one radiologic study does not exclude variation in vascular anatomy.

© 2017 the Authors. Published by Elsevier Inc. under copyright license from the University of Washington. This is an open access article under the CC BY-NC-ND license (<http://creativecommons.org/licenses/by-nc-nd/4.0/>).

Introduction

The lethality associated with aberrancy in physical form and position of the extracranial internal carotid artery (EICA) has been well documented in the literature. Despite advances in imaging, digital exploration of the retropharynx for a pulsatile mass as proposed by Skillern in 1913 [1] remains the most optimal technique for avoidance of the EICA. Two major categories of variability have been proposed, the first being the distance between the EICA and the pharyngeal wall, and the second being the characteristic morphology of the EICA itself.

Previously published literature on the distances between the EICA and the tonsillar fossa in the pediatric population has demonstrated a pattern where the abovementioned distance increases with the patient's weight and age [2]. Such mobility has clinical implications when one considers the large number of routine surgeries that involve the neck in children and adults. Besides hemorrhage, the close proximity of structures in the retropharynx poses a risk for the spread of infection via seeding from an adjacent abscess. Through the presentation of these 2 cases, we offer hypotheses that would explain changes in the location of the retropharyngeal EICA over a

Competing Interests: The authors have declared that no competing interests exist.

* Corresponding author.

E-mail address: jaskiratgill@gmail.com (J.K. Gill).
<http://dx.doi.org/10.1016/j.radcr.2017.05.008>

1930-0433/© 2017 the Authors. Published by Elsevier Inc. under copyright license from the University of Washington. This is an open access article under the CC BY-NC-ND license (<http://creativecommons.org/licenses/by-nc-nd/4.0/>).

short time interval, and predict the inadequacy of a single study to ascertain vascular anatomy.

Case reports

Case #1

A 56-year-old male patient with obesity and hypertension was evaluated for neck pain after trauma in 2012, at which time an unenhanced computed tomography (CT) head was negative for hemorrhage. In 2013, an unenhanced CT neck was obtained for evaluation of continued neck pain that demonstrated severe cervical spondylosis. The course of the cervical internal carotid arteries was anatomically appropriate during this study (Figs. 1A and B). In 2016, after failure of conservative management, a C5-7 anterior cervical discectomy and fusion was planned. A repeat unenhanced CT cervical spine was obtained for preprocedural evaluation and demonstrated retropharyngeal internal carotid arteries (Figs. 2A and B). There was no history of intubation or neck radiation during this period from 2013-2016. His weight had increased from 224 lbs in 2013 to 247 lbs in 2016.

Case #2

A 73-year-old female patient with metastatic adenocarcinoma of the lung and atherosclerosis presented in 2013 for a work up of aphasia. A CT angiogram of the neck was performed which showed normal anatomical course of the internal carotid arteries (Figs. 3A and B). After a fall in 2016, a CT cervical spine was negative for fractures. However, this study demonstrated a retropharyngeal course of bilateral internal carotids (Figs. 4A and B). In this interim period, the patient had no intubations or neck radiation. The earliest weight available was 198 lbs in 2014 with an interval decrease to 180 lbs in 2016.

Discussion

The above-mentioned cases highlight the changes that can occur in the distance between the EICAs and the retropharyngeal wall over a short-term interval. Deutsch et al [2] stated that in children, the distance between the tonsillar fossa and the EICA has a positive correlation with increasing age and weight until the distance reaches a value of 25 mm in adulthood. Routine procedures, such as tonsillectomies and peritonsillar abscess drainage, which are more common in children, have the potential to cause injury to the EICA [3]. The initial artery to pharyngeal mucosal wall distance in our first patient was 13 mm on the right and 12 mm on the left. In 3 years, this distance decreased to 5 mm on the right, and 6.2 mm on the left. Similarly, in our second patient, the initial distance was 4.6 mm on the right and 10 mm on the left. Three years later, the new distances were 2.6 mm on the right and 4.2 mm on the left. Unlike Deutsch et al's study, in our first case, the patient's weight increased from 224 lbs to 247 lbs with the EICA-mucosal wall distance decreasing to 8 mm on the right and 6 mm on the left. In our second case, the patient lost 18 lbs in 2 years and the EICA-mucosal wall distance decreased by 2 mm on the right, and 6 mm on the left. Based on the findings in the second case, loss of neck adipose tissue could potentially be a factor that could explain the variation in the EICAs course leading to their close proximity.

Pfeiffer et al [4] suggested that the embryological development of the EICAs plays a role in its migration as well. In the embryo, a tortuous EICA emerges from the third aortic arch and begins to uncoil as the heart descends into the mediastinum. Pfeiffer et al suggest that the degree of straightening can affect whether or not the EICA remains kinked or looped. As the most common site of coiling is at the level of the tonsillar fossa, this increases both the likelihood of injury and the presence of a retropharyngeal EICA. To evaluate this further, we measured the vertical distance between the

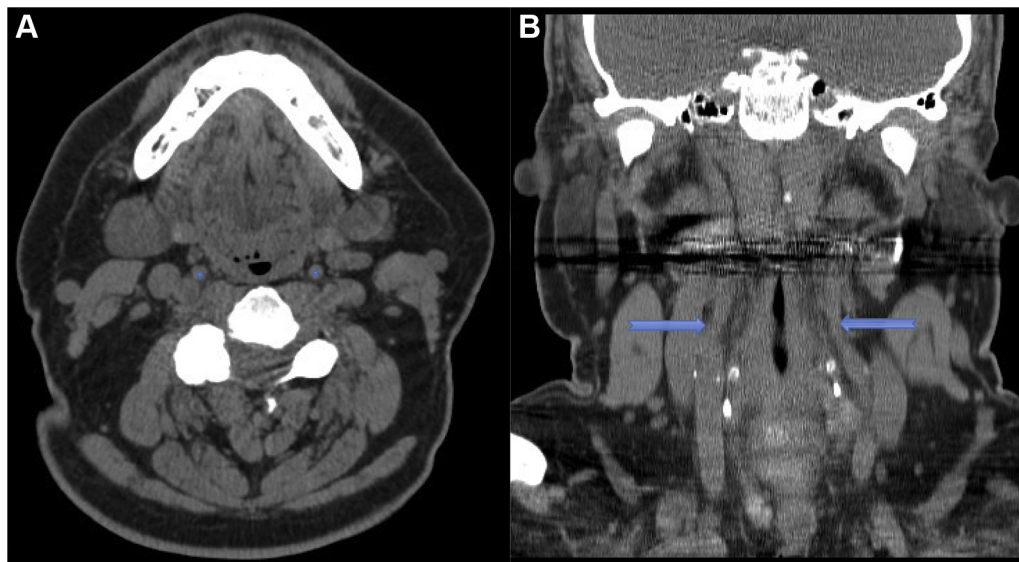


Fig. 1 – Patient 1: CT images of the cervical spine of the initial scan in 2013 demonstrates normal anatomic course of the retropharyngeal internal carotid arteries at C2-C3 level on axial (A) with blue asterisk and on coronal (B) with blue arrows.

Download English Version:

<https://daneshyari.com/en/article/8825338>

Download Persian Version:

<https://daneshyari.com/article/8825338>

[Daneshyari.com](https://daneshyari.com)