

## Accepted Manuscript

Title: Establishment of a precise novel brain trauma model in a large animal based on injury of the cerebral motor cortex

Authors: Jipeng Jiang, Chen Dai, Xuegang Niu, Hongtao Sun, Shixiang Cheng, Zhiwen Zhang, Xu Zhu, Yuting Wang, Tongshuo Zhang, Feng Duan, Xuyi Chen, Sai Zhang



PII: S0165-0270(18)30203-6  
DOI: <https://doi.org/10.1016/j.jneumeth.2018.06.025>  
Reference: NSM 8047

To appear in: *Journal of Neuroscience Methods*

Received date: 29-1-2018  
Revised date: 26-6-2018  
Accepted date: 26-6-2018

Please cite this article as: Jiang J, Dai C, Niu X, Sun H, Cheng S, Zhang Z, Zhu X, Wang Y, Zhang T, Duan F, Chen X, Zhang S, Establishment of a precise novel brain trauma model in a large animal based on injury of the cerebral motor cortex, *Journal of Neuroscience Methods* (2018), <https://doi.org/10.1016/j.jneumeth.2018.06.025>

This is a PDF file of an unedited manuscript that has been accepted for publication. As a service to our customers we are providing this early version of the manuscript. The manuscript will undergo copyediting, typesetting, and review of the resulting proof before it is published in its final form. Please note that during the production process errors may be discovered which could affect the content, and all legal disclaimers that apply to the journal pertain.

## Establishment of a precise novel brain trauma model in a large animal based on injury of the cerebral motor cortex

Jipeng Jiang<sup>a,\*</sup>, Chen Dai<sup>a,\*</sup>, Xuegang Niu<sup>a</sup>, Hongtao Sun<sup>a</sup>, Shixiang Cheng<sup>a</sup>, Zhiwen Zhang<sup>b</sup>, Xu Zhu<sup>c</sup>, Yuting Wang<sup>c</sup>, Tongshuo Zhang<sup>d</sup>, Feng Duan<sup>b</sup>, Xuyi Chen<sup>a,✉</sup>, Sai Zhang<sup>a,✉\*</sup>

<sup>a</sup> Institution of Brain Trauma and Neurology Disease, Key laboratory of neurotrauma repair of Tianjin, Affiliated Hospital of Logistics University of PAP, Chenglin Road No.220, Tianjin 300162, China.

<sup>b</sup> Department of Automation, College of Computer and Control Engineering, Nankai University, Tongyan Road No.38, Tianjin 300350, China.

<sup>c</sup> Tianjin Medical University, Qixiangtai Road No.22, Tianjin 300070, China.

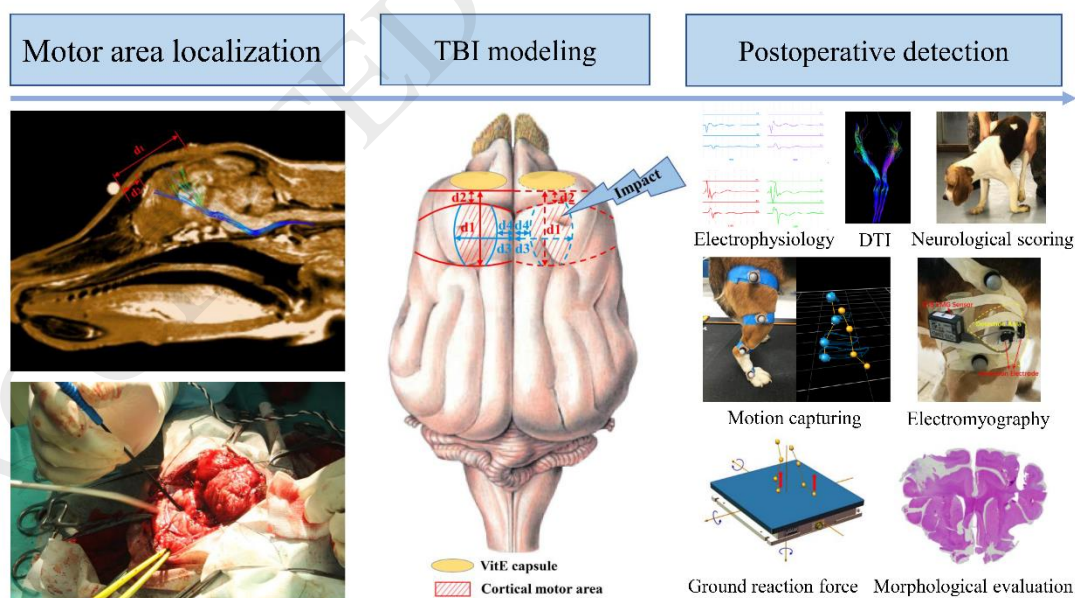
<sup>d</sup> Department of Clinical Laboratory of Affiliated Hospital of Logistics University of PAP, Chenglin Road No.220, Tianjin 300162, China.

\*These authors contribute equally to this work. ✉ Corresponding Authors.

\*Correspondence and requests for this paper should be addressed to Jipeng Jiang

(Email: [13502034360@163.com](mailto:13502034360@163.com))

### Graphical abstract:



Download English Version:

<https://daneshyari.com/en/article/8840232>

Download Persian Version:

<https://daneshyari.com/article/8840232>

[Daneshyari.com](https://daneshyari.com)