

Accepted Manuscript

Masking differentially affects envelope-following responses in young and aged animals

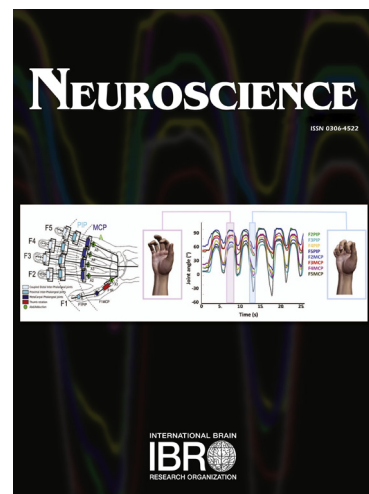
Jesyin Lai, Edward L. Bartlett

PII: S0306-4522(18)30415-9

DOI: <https://doi.org/10.1016/j.neuroscience.2018.06.004>

Reference: NSC 18493

To appear in: *Neuroscience*



Please cite this article as: J. Lai, E.L. Bartlett, Masking differentially affects envelope-following responses in young and aged animals, *Neuroscience* (2018), doi: <https://doi.org/10.1016/j.neuroscience.2018.06.004>

This is a PDF file of an unedited manuscript that has been accepted for publication. As a service to our customers we are providing this early version of the manuscript. The manuscript will undergo copyediting, typesetting, and review of the resulting proof before it is published in its final form. Please note that during the production process errors may be discovered which could affect the content, and all legal disclaimers that apply to the journal pertain.

Masking differentially affects envelope-following responses in
young and aged animals

Jesyin Lai^{a, c}, Edward L. Bartlett^{a, b, *}

^a Department of Biological Sciences, Purdue University, West Lafayette, IN
47906, USA

^b Weldon School of Biomedical Engineering, Purdue University, West Lafayette,
IN 47906, USA

^c Oregon Hearing Research Center, Oregon Health and Science University,
Portland, OR 97239, USA

*** Corresponding Author:**

Edward L. Bartlett

Purdue University

Weldon School of Biomedical Engineering

206 S. Martin Jischke Drive

West Lafayette, IN 47907-2032

ebartle@purdue.edu

Download English Version:

<https://daneshyari.com/en/article/8840600>

Download Persian Version:

<https://daneshyari.com/article/8840600>

[Daneshyari.com](https://daneshyari.com)