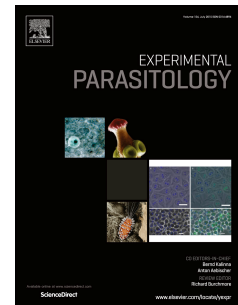


# Accepted Manuscript

Effect of *Piper betle* on *Giardia intestinalis* infection *in vivo*

Radka Pecková, Karel Doležal, Bohumil Sak, Dana Květoňová, Martin Kváč, Wisnu Nurcahyo, Ivona Foitová



PII: S0014-4894(17)30236-9

DOI: [10.1016/j.exppara.2017.11.005](https://doi.org/10.1016/j.exppara.2017.11.005)

Reference: YEXPR 7490

To appear in: *Experimental Parasitology*

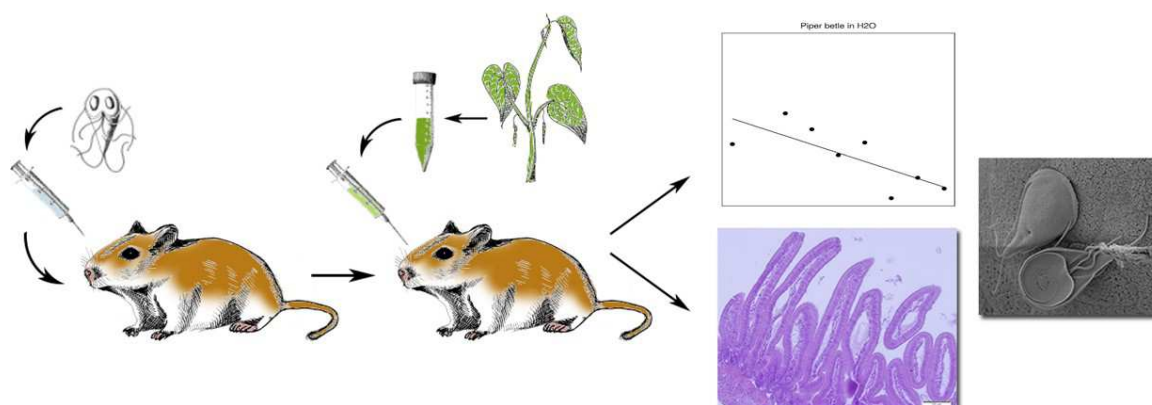
Received Date: 15 May 2017

Revised Date: 8 November 2017

Accepted Date: 12 November 2017

Please cite this article as: Pecková, R., Doležal, K., Sak, B., Květoňová, D., Kváč, M., Nurcahyo, W., Foitová, I., Effect of *Piper betle* on *Giardia intestinalis* infection *in vivo*, *Experimental Parasitology* (2017), doi: 10.1016/j.exppara.2017.11.005.

This is a PDF file of an unedited manuscript that has been accepted for publication. As a service to our customers we are providing this early version of the manuscript. The manuscript will undergo copyediting, typesetting, and review of the resulting proof before it is published in its final form. Please note that during the production process errors may be discovered which could affect the content, and all legal disclaimers that apply to the journal pertain.



Download English Version:

<https://daneshyari.com/en/article/8844670>

Download Persian Version:

<https://daneshyari.com/article/8844670>

[Daneshyari.com](https://daneshyari.com)