

# Accepted Manuscript

Inhibitory effects of (+)-spectaline and iso-6-spectaline from *Senna spectabilis* on the growth and ultrastructure of human-infective species *Trypanosoma brucei rhodesiense* bloodstream form

Kah Tee Lim, Azimah Amanah, Nelson Jeng-Yeou Chear, Zuriati Zahari, Zafarina Zainuddin, Mohd. Ilham Adenan

PII: S0014-4894(17)30022-X

DOI: [10.1016/j.exppara.2017.11.007](https://doi.org/10.1016/j.exppara.2017.11.007)

Reference: YEXPR 7492

To appear in: *Experimental Parasitology*

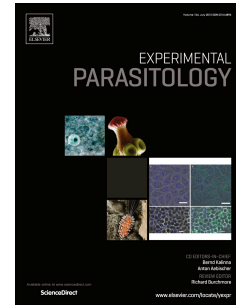
Received Date: 11 January 2017

Revised Date: 17 September 2017

Accepted Date: 19 November 2017

Please cite this article as: Lim, K.T., Amanah, A., Chear, N.J.-Y., Zahari, Z., Zainuddin, Z., Adenan, M.I., Inhibitory effects of (+)-spectaline and iso-6-spectaline from *Senna spectabilis* on the growth and ultrastructure of human-infective species *Trypanosoma brucei rhodesiense* bloodstream form, *Experimental Parasitology* (2017), doi: 10.1016/j.exppara.2017.11.007.

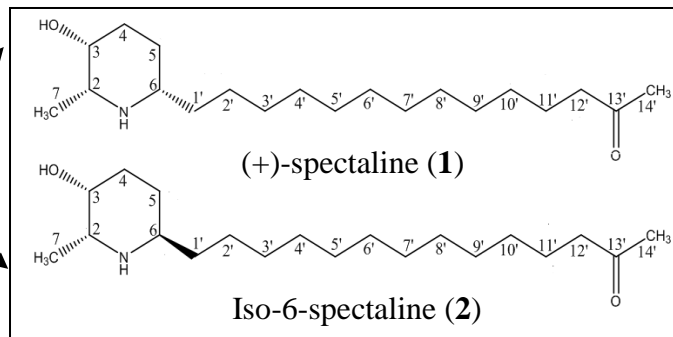
This is a PDF file of an unedited manuscript that has been accepted for publication. As a service to our customers we are providing this early version of the manuscript. The manuscript will undergo copyediting, typesetting, and review of the resulting proof before it is published in its final form. Please note that during the production process errors may be discovered which could affect the content, and all legal disclaimers that apply to the journal pertain.



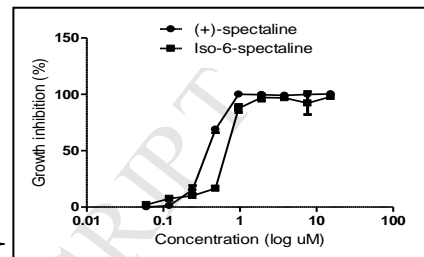


*Senna spectabilis*

Bioassay-guided isolation



Inhibition



*Trypanosoma brucei rhodesiense*



Autophagy

Download English Version:

<https://daneshyari.com/en/article/8844672>

Download Persian Version:

<https://daneshyari.com/article/8844672>

[Daneshyari.com](https://daneshyari.com)