

# Accepted Manuscript

An innovative expression model of human health risk based on the quantitative analysis of soil metals sources contribution in different spatial scales

Yimei Zhang, Shuai Li, Fei Wang, Zhuang Chen, Jie Chen, Liqun Wang



PII: S0045-6535(18)30812-9

DOI: [10.1016/j.chemosphere.2018.04.157](https://doi.org/10.1016/j.chemosphere.2018.04.157)

Reference: CHEM 21305

To appear in: *ECSN*

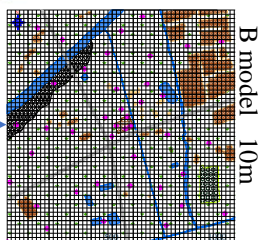
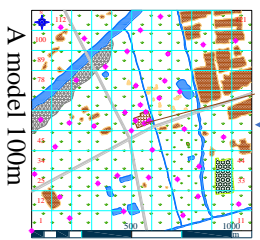
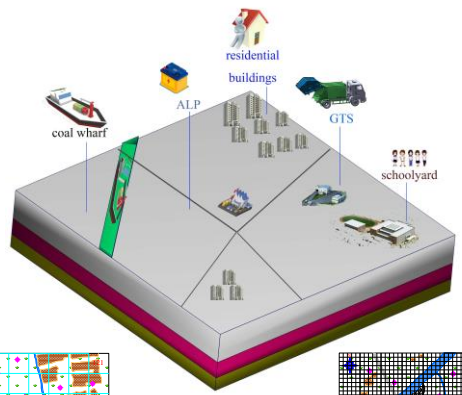
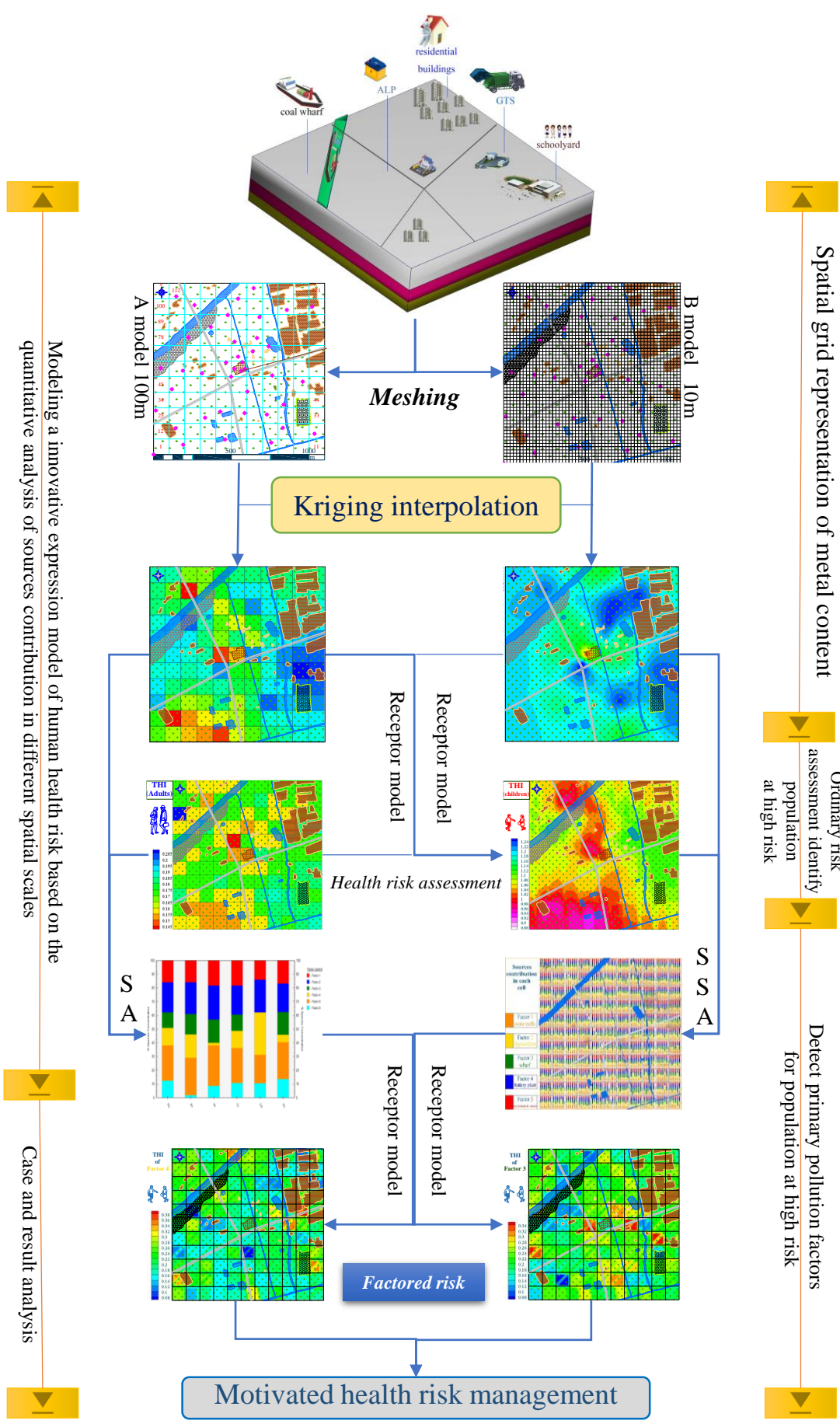
Received Date: 25 January 2018

Revised Date: 18 April 2018

Accepted Date: 26 April 2018

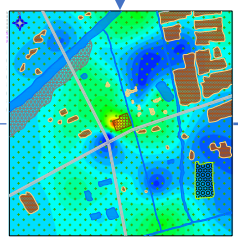
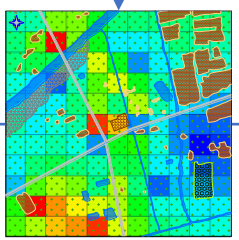
Please cite this article as: Zhang, Y., Li, S., Wang, F., Chen, Z., Chen, J., Wang, L., An innovative expression model of human health risk based on the quantitative analysis of soil metals sources contribution in different spatial scales, *Chemosphere* (2018), doi: 10.1016/j.chemosphere.2018.04.157.

This is a PDF file of an unedited manuscript that has been accepted for publication. As a service to our customers we are providing this early version of the manuscript. The manuscript will undergo copyediting, typesetting, and review of the resulting proof before it is published in its final form. Please note that during the production process errors may be discovered which could affect the content, and all legal disclaimers that apply to the journal pertain.



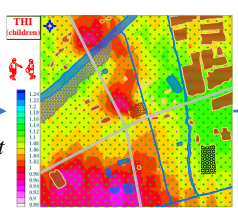
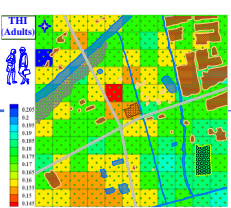
**Meshing**

**Kriging interpolation**

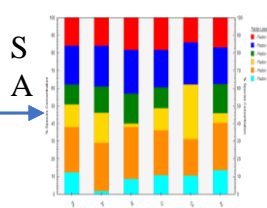
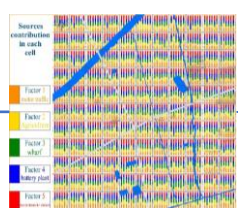


**Receptor model**

**Health risk assessment**

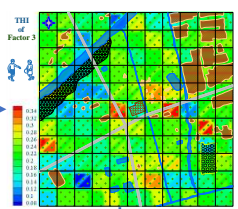
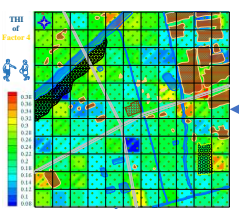


**S S A**



**Receptor model**

**Factored risk**



Download English Version:

<https://daneshyari.com/en/article/8850836>

Download Persian Version:

<https://daneshyari.com/article/8850836>

[Daneshyari.com](https://daneshyari.com)