

# Accepted Manuscript

Geospatial analysis of residential proximity to open-pit coal mining areas in relation to micronuclei frequency, particulate matter concentration, and elemental enrichment factors

Lyda Espitia-Pérez, Marcia Arteaga, José Salvador Soto, Pedro Espitia-Pérez, Shirley Salcedo-Arteaga, Karina Pastor-Sierra, Claudia Galeano-Páez, Hugo Brango, Juliana da Silva, João A.P. Henriques

PII: S0045-6535(18)30691-X

DOI: [10.1016/j.chemosphere.2018.04.049](https://doi.org/10.1016/j.chemosphere.2018.04.049)

Reference: CHEM 21197

To appear in: *ECSN*

Received Date: 10 February 2018

Revised Date: 2 April 2018

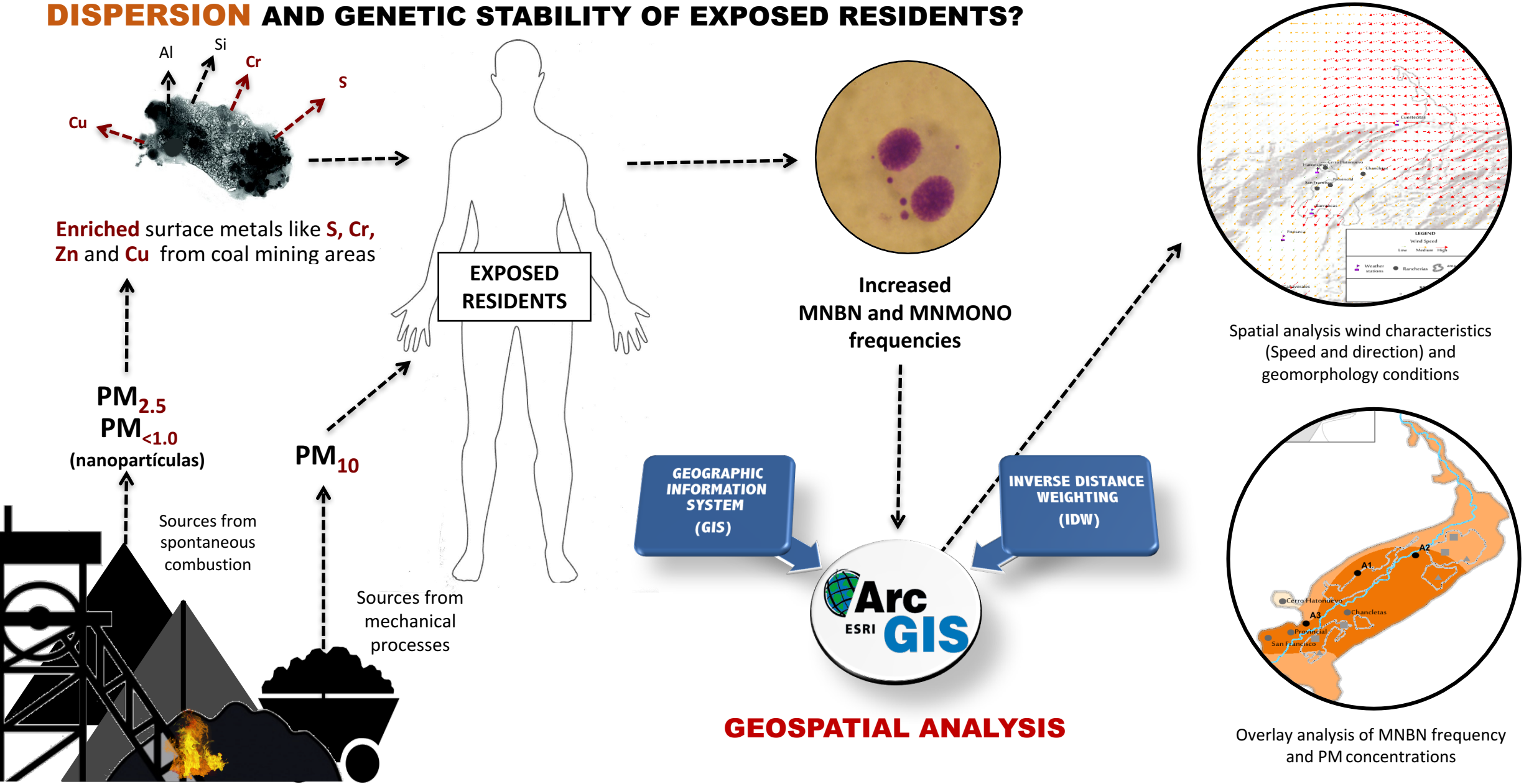
Accepted Date: 9 April 2018

Please cite this article as: Espitia-Pérez, L., Arteaga, M., Soto, José.Salvador., Espitia-Pérez, P., Salcedo-Arteaga, S., Pastor-Sierra, K., Galeano-Páez, C., Brango, H., da Silva, J., Henriques, Joã.A.P., Geospatial analysis of residential proximity to open-pit coal mining areas in relation to micronuclei frequency, particulate matter concentration, and elemental enrichment factors, *Chemosphere* (2018), doi: 10.1016/j.chemosphere.2018.04.049.

This is a PDF file of an unedited manuscript that has been accepted for publication. As a service to our customers we are providing this early version of the manuscript. The manuscript will undergo copyediting, typesetting, and review of the resulting proof before it is published in its final form. Please note that during the production process errors may be discovered which could affect the content, and all legal disclaimers that apply to the journal pertain.



# HOW WIND AND RELIEF AROUND COAL MINING AREAS AFFECTS RESIDUES DISPERSION AND GENETIC STABILITY OF EXPOSED RESIDENTS?



Download English Version:

<https://daneshyari.com/en/article/8850884>

Download Persian Version:

<https://daneshyari.com/article/8850884>

[Daneshyari.com](https://daneshyari.com)