

Accepted Manuscript

Depletion study, withdrawal period calculation and bioaccumulation of sulfamethazine in tilapia (*Oreochromis niloticus*) treated with medicated feed

Kátia S.D. Nunes, José H. Vallim, Márcia R. Assalin, Sonia C.N. Queiroz, Lourival C. Paraíba, Claudio M. Jonsson, Felix G.R. Reyes



PII: S0045-6535(18)30036-5

DOI: [10.1016/j.chemosphere.2018.01.030](https://doi.org/10.1016/j.chemosphere.2018.01.030)

Reference: CHEM 20611

To appear in: *ECSN*

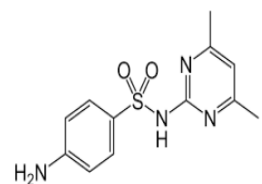
Received Date: 3 July 2017

Revised Date: 27 November 2017

Accepted Date: 8 January 2018

Please cite this article as: Nunes, Ká.S.D., Vallim, José.H., Assalin, Má.R., Queiroz, S.C.N., Paraíba, L.C., Jonsson, C.M., Reyes, F.G.R., Depletion study, withdrawal period calculation and bioaccumulation of sulfamethazine in tilapia (*Oreochromis niloticus*) treated with medicated feed, *Chemosphere* (2018), doi: 10.1016/j.chemosphere.2018.01.030.

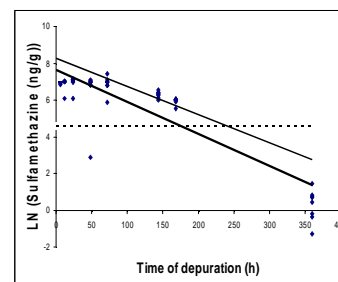
This is a PDF file of an unedited manuscript that has been accepted for publication. As a service to our customers we are providing this early version of the manuscript. The manuscript will undergo copyediting, typesetting, and review of the resulting proof before it is published in its final form. Please note that during the production process errors may be discovered which could affect the content, and all legal disclaimers that apply to the journal pertain.



Sulfamethazine administrated dose (422 mg/kg bw/day for 11 days) via feed.



Tilapia (*Oreochromis niloticus*)



Sulfamethazine residues in muscle after exposure through medicated feed.

Download English Version:

<https://daneshyari.com/en/article/8851992>

Download Persian Version:

<https://daneshyari.com/article/8851992>

[Daneshyari.com](https://daneshyari.com)