

Accepted Manuscript

A dual tracer ratio method for comparative emission measurements in an experimental dairy housing

Joachim Mohn, Kerstin Zeyer, Margret Keck, Markus Keller, Michael Zähler, Jernej Poteko, Lukas Emmenegger, Sabine Schrade



PII: S1352-2310(18)30071-2

DOI: [10.1016/j.atmosenv.2018.01.057](https://doi.org/10.1016/j.atmosenv.2018.01.057)

Reference: AEA 15816

To appear in: *Atmospheric Environment*

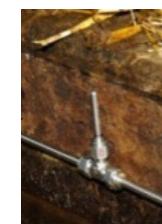
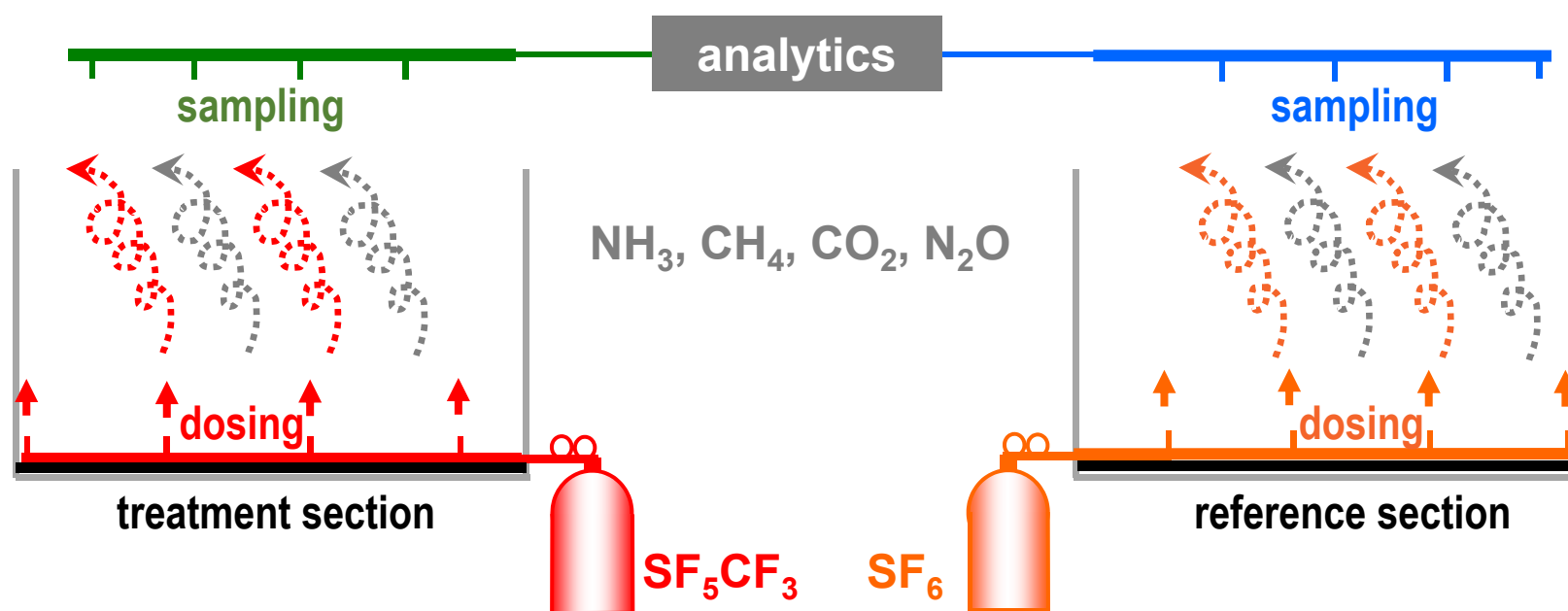
Received Date: 6 October 2017

Revised Date: 12 January 2018

Accepted Date: 30 January 2018

Please cite this article as: Mohn, J., Zeyer, K., Keck, M., Keller, M., Zähler, M., Poteko, J., Emmenegger, L., Schrade, S., A dual tracer ratio method for comparative emission measurements in an experimental dairy housing, *Atmospheric Environment* (2018), doi: 10.1016/j.atmosenv.2018.01.057.

This is a PDF file of an unedited manuscript that has been accepted for publication. As a service to our customers we are providing this early version of the manuscript. The manuscript will undergo copyediting, typesetting, and review of the resulting proof before it is published in its final form. Please note that during the production process errors may be discovered which could affect the content, and all legal disclaimers that apply to the journal pertain.



Validation of the dual tracer ratio method:

High accuracy and sensitivity for quantification of NH_3 and GHG emissions

Suitability for areal and point sources

Minimal cross-contamination of experimental sections

Equivalence of SF_6 / SF_5CF_3

Download English Version:

<https://daneshyari.com/en/article/8863945>

Download Persian Version:

<https://daneshyari.com/article/8863945>

[Daneshyari.com](https://daneshyari.com)