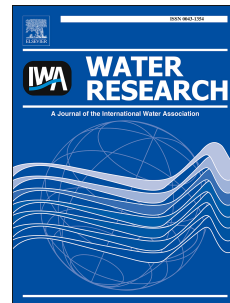


Accepted Manuscript

Changes in the physical properties of the dynamic layer and its correlation with permeate quality in a self-forming dynamic membrane bioreactor

Dao Guan, Ji Dai, Yoshimasa Watanabe, Guanghao Chen



PII: S0043-1354(18)30335-X

DOI: [10.1016/j.watres.2018.04.041](https://doi.org/10.1016/j.watres.2018.04.041)

Reference: WR 13738

To appear in: *Water Research*

Received Date: 9 February 2018

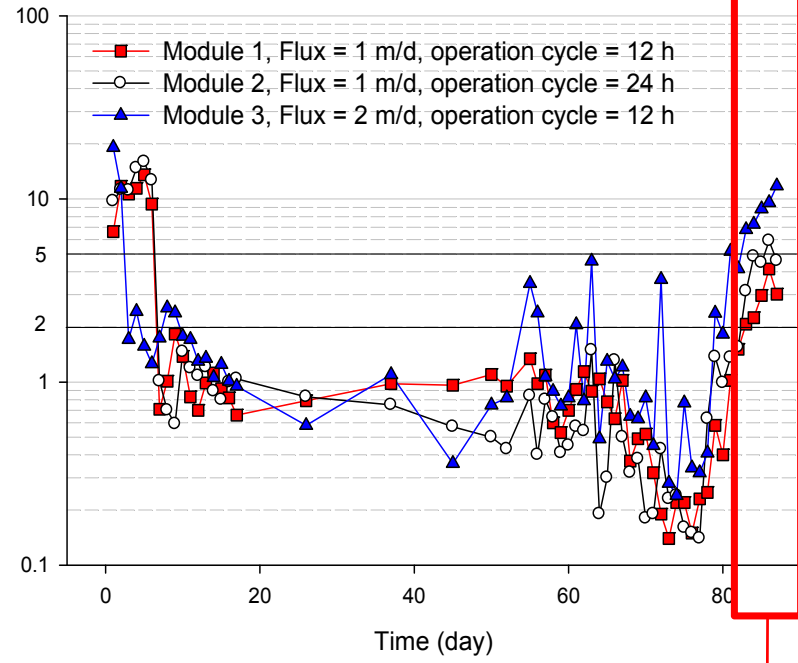
Revised Date: 7 April 2018

Accepted Date: 17 April 2018

Please cite this article as: Guan, D., Dai, J., Watanabe, Y., Chen, G., Changes in the physical properties of the dynamic layer and its correlation with permeate quality in a self-forming dynamic membrane bioreactor, *Water Research* (2018), doi: 10.1016/j.watres.2018.04.041.

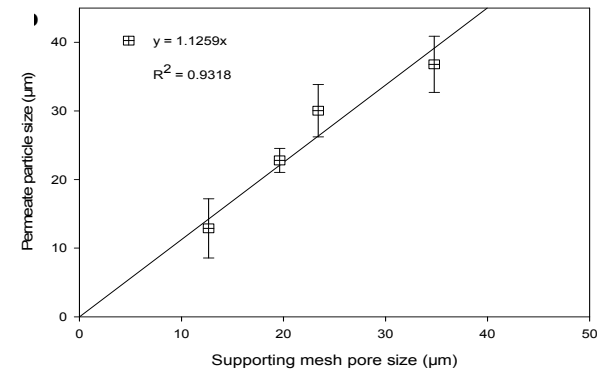
This is a PDF file of an unedited manuscript that has been accepted for publication. As a service to our customers we are providing this early version of the manuscript. The manuscript will undergo copyediting, typesetting, and review of the resulting proof before it is published in its final form. Please note that during the production process errors may be discovered which could affect the content, and all legal disclaimers that apply to the journal pertain.

System performance

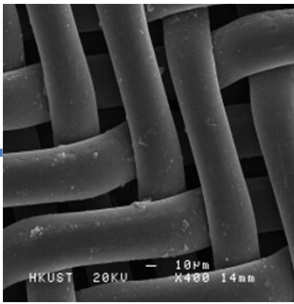


Acceptable start-up duration;
High effluent quality during
stable operation phase.

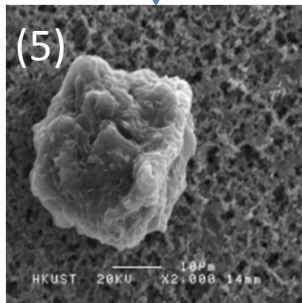
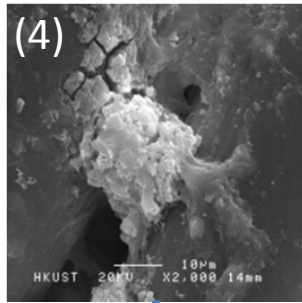
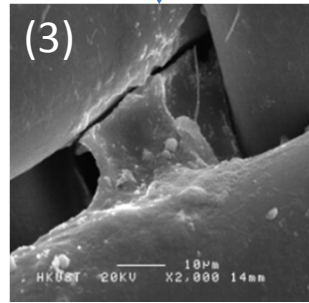
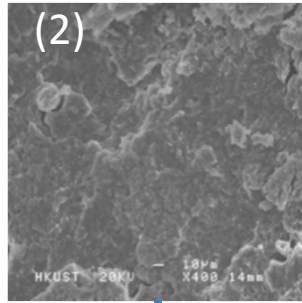
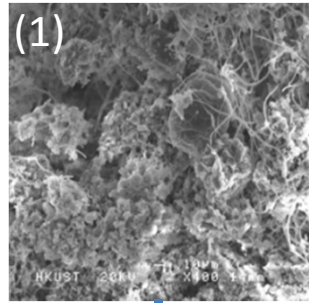
The major permeate particles are
from dynamic layer dissociation,
which explains effluent
deterioration in fouling phase.



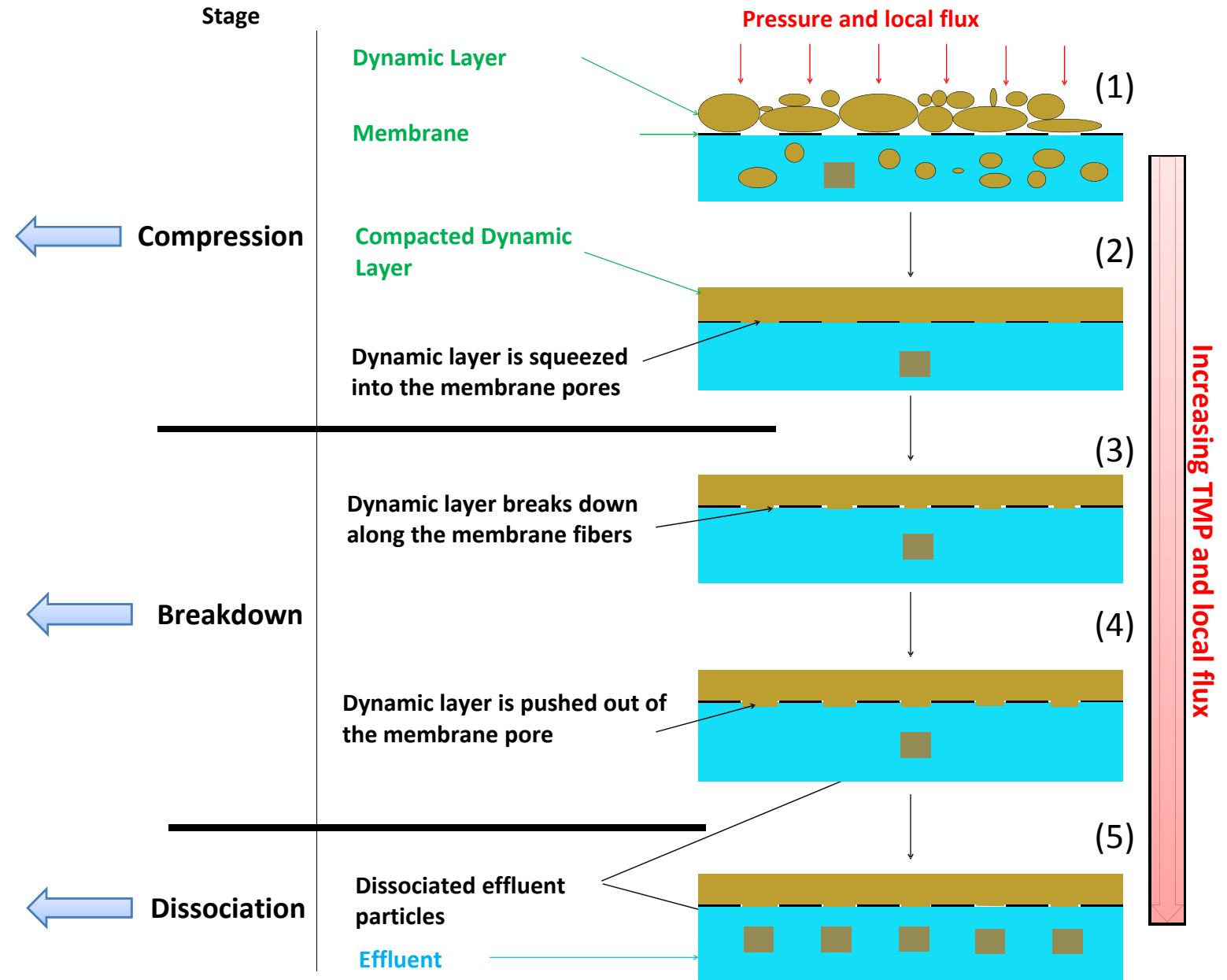
SFDMBR supporting material



Dynamic layer



Self-forming dynamic membrane bioreactor mechanism



Download English Version:

<https://daneshyari.com/en/article/8873817>

Download Persian Version:

<https://daneshyari.com/article/8873817>

[Daneshyari.com](https://daneshyari.com)