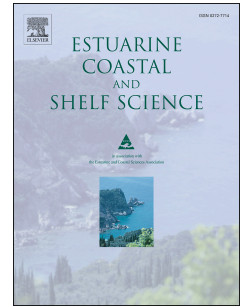


Accepted Manuscript

Impact of artisanal benthic fisheries on marine ecosystems: A case study in the Gulf of California

J. Urra, J.M. Ayala, L.A. McConnico, C. Méndez, L.A. Mora Valdés, A. Pleités, R. Riosmena-Rodríguez



PII: S0272-7714(17)31110-1

DOI: [10.1016/j.ecss.2018.06.024](https://doi.org/10.1016/j.ecss.2018.06.024)

Reference: YECSS 5900

To appear in: *Estuarine, Coastal and Shelf Science*

Received Date: 23 November 2017

Revised Date: 5 June 2018

Accepted Date: 25 June 2018

Please cite this article as: Urra, J., Ayala, J.M., McConnico, L.A., Méndez, C., Mora Valdés, L.A., Pleités, A., Riosmena-Rodríguez, R., Impact of artisanal benthic fisheries on marine ecosystems: A case study in the Gulf of California, *Estuarine, Coastal and Shelf Science* (2018), doi: 10.1016/j.ecss.2018.06.024.

This is a PDF file of an unedited manuscript that has been accepted for publication. As a service to our customers we are providing this early version of the manuscript. The manuscript will undergo copyediting, typesetting, and review of the resulting proof before it is published in its final form. Please note that during the production process errors may be discovered which could affect the content, and all legal disclaimers that apply to the journal pertain.

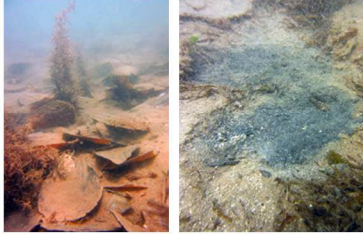
Hand-collecting of *Atrina maura* on a rhodolith bed by hookah diver



Pen shell discarded on the rhodolith bed



Polluted site: soft bottom habitat with many pen shell remains



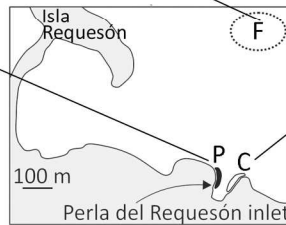
Black spots may indicate potentially reduced sediments

High mud and OM content.
Dominance of detritivores and deposit feeders

Control site: no signs of impact



Low mud and moderate OM content
Dominance of depositivores and filter feeding organisms



ACCEPTED MANUSCRIPT

Download English Version:

<https://daneshyari.com/en/article/8884603>

Download Persian Version:

<https://daneshyari.com/article/8884603>

[Daneshyari.com](https://daneshyari.com)