

Accepted Manuscript

Epifaunal community composition in five macroalgal species – What are the consequences if some algal species are lost?

Anniina Saarinen, Sonja Salovius-Laurén, Johanna Mattila



PII: S0272-7714(17)30087-2

DOI: [10.1016/j.ecss.2017.08.009](https://doi.org/10.1016/j.ecss.2017.08.009)

Reference: YECSS 5564

To appear in: *Estuarine, Coastal and Shelf Science*

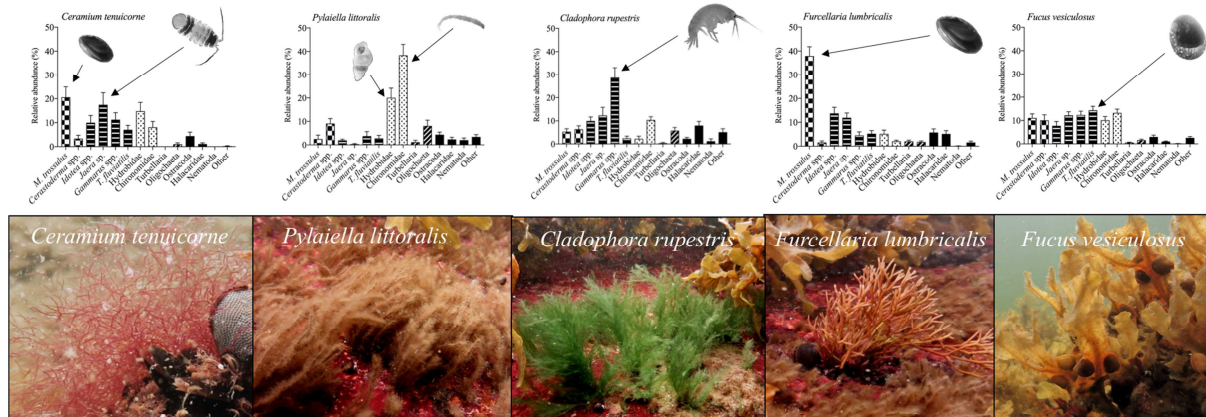
Received Date: 22 January 2017

Revised Date: 19 June 2017

Accepted Date: 8 August 2017

Please cite this article as: Saarinen, A., Salovius-Laurén, S., Mattila, J., Epifaunal community composition in five macroalgal species – What are the consequences if some algal species are lost?, *Estuarine, Coastal and Shelf Science* (2017), doi: 10.1016/j.ecss.2017.08.009.

This is a PDF file of an unedited manuscript that has been accepted for publication. As a service to our customers we are providing this early version of the manuscript. The manuscript will undergo copyediting, typesetting, and review of the resulting proof before it is published in its final form. Please note that during the production process errors may be discovered which could affect the content, and all legal disclaimers that apply to the journal pertain.



ACCEPTED MANUSCRIPT

Download English Version:

<https://daneshyari.com/en/article/8884848>

Download Persian Version:

<https://daneshyari.com/article/8884848>

[Daneshyari.com](https://daneshyari.com)