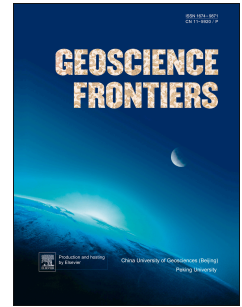


Accepted Manuscript

Crustal structure and sedimentation history over the Alleppey platform, southwest continental margin of India: Constraints from multichannel seismic and gravity data

P. Unnikrishnan, M. Radhakrishna, G.K. Prasad



PII: S1674-9871(17)30106-8

DOI: [10.1016/j.gsf.2017.06.002](https://doi.org/10.1016/j.gsf.2017.06.002)

Reference: GSF 572

To appear in: *Geoscience Frontiers*

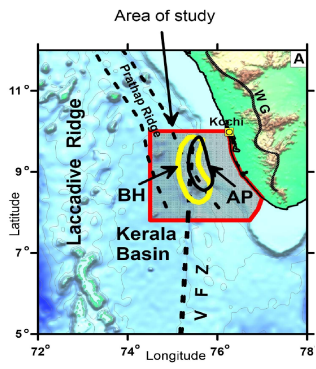
Received Date: 7 December 2016

Revised Date: 14 April 2017

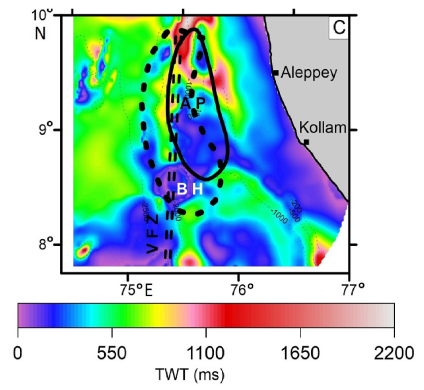
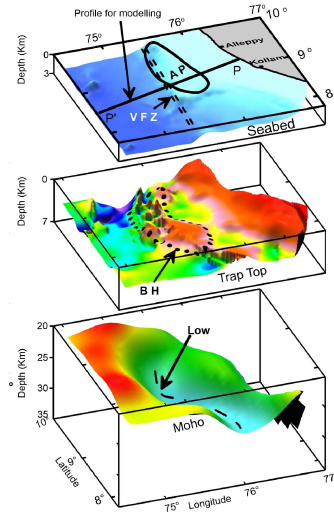
Accepted Date: 7 June 2017

Please cite this article as: Unnikrishnan, P., Radhakrishna, M., Prasad, G.K., Crustal structure and sedimentation history over the Alleppey platform, southwest continental margin of India: Constraints from multichannel seismic and gravity data, *Geoscience Frontiers* (2017), doi: 10.1016/j.gsf.2017.06.002.

This is a PDF file of an unedited manuscript that has been accepted for publication. As a service to our customers we are providing this early version of the manuscript. The manuscript will undergo copyediting, typesetting, and review of the resulting proof before it is published in its final form. Please note that during the production process errors may be discovered which could affect the content, and all legal disclaimers that apply to the journal pertain.



AP : Alleppey Platform
BH : Basement High
TA : Tellicherry Arch
WG: Western Ghats



Download English Version:

<https://daneshyari.com/en/article/8907501>

Download Persian Version:

<https://daneshyari.com/article/8907501>

[Daneshyari.com](https://daneshyari.com)