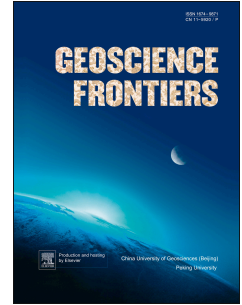


Accepted Manuscript

Granitoid emplacement during syn-convergent transtension: An example from the Huamenlou pluton in North Qinling, central China

Yang Li, Wentian Liang, Guowei Zhang, Yazhou Ran, Qi Shen, Jingli Wang, Chunsheng Jin



PII: S1674-9871(17)30045-2

DOI: [10.1016/j.gsf.2017.02.007](https://doi.org/10.1016/j.gsf.2017.02.007)

Reference: GSF 543

To appear in: *Geoscience Frontiers*

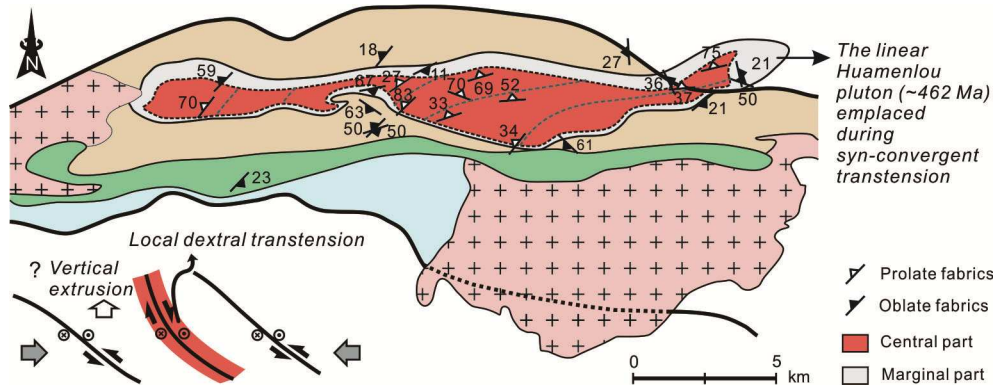
Received Date: 10 January 2017

Revised Date: 21 February 2017

Accepted Date: 24 February 2017

Please cite this article as: Li, Y., Liang, W., Zhang, G., Ran, Y., Shen, Q., Wang, J., Jin, C., Granitoid emplacement during syn-convergent transtension: An example from the Huamenlou pluton in North Qinling, central China, *Geoscience Frontiers* (2017), doi: 10.1016/j.gsf.2017.02.007.

This is a PDF file of an unedited manuscript that has been accepted for publication. As a service to our customers we are providing this early version of the manuscript. The manuscript will undergo copyediting, typesetting, and review of the resulting proof before it is published in its final form. Please note that during the production process errors may be discovered which could affect the content, and all legal disclaimers that apply to the journal pertain.



Download English Version:

<https://daneshyari.com/en/article/8907519>

Download Persian Version:

<https://daneshyari.com/article/8907519>

[Daneshyari.com](https://daneshyari.com)