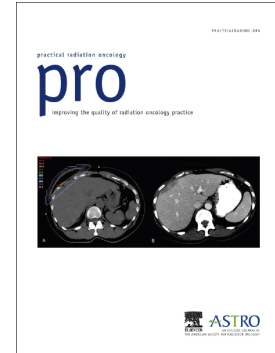


# Accepted Manuscript

Personalized automated treatment planning for breast plus  
locoregional lymph nodes using Hybrid RapidArc

Mariët J van Duren-Koopman, Jim P Tol, Max Dahele, Ewa  
Bucko, Ben J Slotman, Wilko FAR Verbakel



PII: S1879-8500(18)30114-0  
DOI: doi:[10.1016/j.prro.2018.03.008](https://doi.org/10.1016/j.prro.2018.03.008)  
Reference: PRRO 898

To appear in:

Received date: 20 September 2017  
Revised date: 19 February 2018  
Accepted date: 20 March 2018

Please cite this article as: Mariët J van Duren-Koopman, Jim P Tol, Max Dahele, Ewa Bucko, Ben J Slotman, Wilko FAR Verbakel , Personalized automated treatment planning for breast plus locoregional lymph nodes using Hybrid RapidArc. The address for the corresponding author was captured as affiliation for all authors. Please check if appropriate. Prro(2018), doi:[10.1016/j.prro.2018.03.008](https://doi.org/10.1016/j.prro.2018.03.008)

This is a PDF file of an unedited manuscript that has been accepted for publication. As a service to our customers we are providing this early version of the manuscript. The manuscript will undergo copyediting, typesetting, and review of the resulting proof before it is published in its final form. Please note that during the production process errors may be discovered which could affect the content, and all legal disclaimers that apply to the journal pertain.

**Personalized automated treatment planning for breast plus locoregional lymph nodes using Hybrid  
RapidArc**

**Mariët J van Duren-Koopman, MSc, Jim P Tol\*, PhD, Max Dahele, MBChB, MSc, PhD, FRCP, FRCR,  
Ewa Bucko, Philip Meijnen MD, PhD, Ben J Slotman, MD, PhD, Wilko FAR Verbakel, PhD**

Department of Radiotherapy, VU University Medical Center,

De Boelelaan 1117, 1081 HV Amsterdam, The Netherlands

**Corresponding author**

J P Tol PhD,

Department of Radiotherapy, VU University Medical Center,

De Boelelaan 1117, 1081 HV Amsterdam, The Netherlands

Phone: +31(20)4440841

Fax: +31(20)4440410

j.tol@vumc.nl

**Running title:** Automated planning for breast plus nodes

**Acknowledgements**

This research was performed using a grant from Varian Medical Systems.

**Conflict of Interest Notification**

The department has a research collaboration with Varian Medical Systems and Dahele, Slotman and Verbakel have received honoraria/travel support from Varian medical systems.

Download English Version:

<https://daneshyari.com/en/article/8958504>

Download Persian Version:

<https://daneshyari.com/article/8958504>

[Daneshyari.com](https://daneshyari.com)