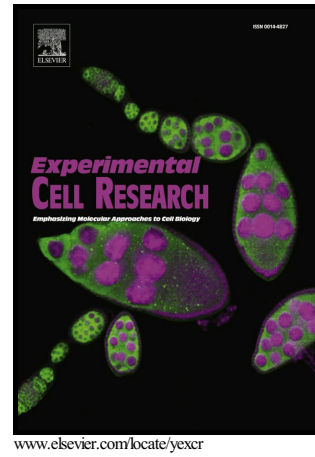


Author's Accepted Manuscript

Cytotoxicity of *Clostridium perfringens* enterotoxin depends on the conditions of claudin-4 in ovarian carcinoma cells

Satoshi Tanaka, Tomoyuki Aoyama, Marie Ogawa, Akira Takasawa, Masaki Murata, Makoto Osanai, Tsuyoshi Saito, Norimasa Sawada



PII: S0014-4827(18)30773-0
DOI: <https://doi.org/10.1016/j.yexcr.2018.08.024>
Reference: YEXCR11175

To appear in: *Experimental Cell Research*

Received date: 15 February 2018
Revised date: 8 August 2018
Accepted date: 21 August 2018

Cite this article as: Satoshi Tanaka, Tomoyuki Aoyama, Marie Ogawa, Akira Takasawa, Masaki Murata, Makoto Osanai, Tsuyoshi Saito and Norimasa Sawada, Cytotoxicity of *Clostridium perfringens* enterotoxin depends on the conditions of claudin-4 in ovarian carcinoma cells, *Experimental Cell Research*, <https://doi.org/10.1016/j.yexcr.2018.08.024>

This is a PDF file of an unedited manuscript that has been accepted for publication. As a service to our customers we are providing this early version of the manuscript. The manuscript will undergo copyediting, typesetting, and review of the resulting galley proof before it is published in its final citable form. Please note that during the production process errors may be discovered which could affect the content, and all legal disclaimers that apply to the journal pertain.

**Cytotoxicity of *Clostridium perfringens* enterotoxin depends on the conditions of
claudin-4 in ovarian carcinoma cells**

Satoshi Tanaka^{1, 3}, Tomoyuki Aoyama¹, Marie Ogawa^{1, 2}, Akira Takasawa¹, Masaki
Murata¹, Makoto Osanai¹, Tsuyoshi Saito², Norimasa Sawada¹

¹Department of Pathology, Sapporo Medical University, School of Medicine, Sapporo
Japan; ²Department of Gynecology and Obstetrics, Sapporo Medical University,
School of Medicine, Sapporo Japan; ³Present address: Division of Pathology, Center
for Cause of Death Investigation, Hokkaido University Faculty of Medicine, Sapporo,
Japan

Corresponding author: Satoshi Tanaka

Department of Pathology, Sapporo Medical University, School of Medicine,
Minami-1, Nishi-17, Chuo-ku, Sapporo 060-8556, Japan

Phone: +81-11-611-2111 (ext. 2701); Fax: +81-11-613-5665

Present address: Division of Pathology, Center for Cause of Death Investigation,
Hokkaido University Faculty of Medicine, Kita-15, Nishi-7, Kita-ku Sapporo
060-8638 Japan

Download English Version:

<https://daneshyari.com/en/article/8962178>

Download Persian Version:

<https://daneshyari.com/article/8962178>

[Daneshyari.com](https://daneshyari.com)