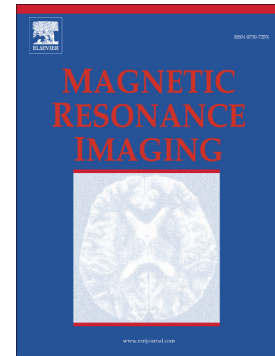


## Accepted Manuscript

Association among T2 signal intensity, necrosis, ADC and Ki-67 in estrogen receptor-positive and HER2-negative invasive ductal carcinoma

Soo-Yeon Kim, Eun-Kyung Kim, Hee Jung Moon, Jung Hyun Yoon, Ja Seung Koo, Sungheon Gene Kim, Min Jung Kim



PII: S0730-725X(18)30178-4  
DOI: doi:[10.1016/j.mri.2018.08.017](https://doi.org/10.1016/j.mri.2018.08.017)  
Reference: MRI 9029

To appear in: *Magnetic Resonance Imaging*

Received date: 27 May 2018  
Revised date: 13 August 2018  
Accepted date: 27 August 2018

Please cite this article as: Soo-Yeon Kim, Eun-Kyung Kim, Hee Jung Moon, Jung Hyun Yoon, Ja Seung Koo, Sungheon Gene Kim, Min Jung Kim , Association among T2 signal intensity, necrosis, ADC and Ki-67 in estrogen receptor-positive and HER2-negative invasive ductal carcinoma. *Mri* (2018), doi:[10.1016/j.mri.2018.08.017](https://doi.org/10.1016/j.mri.2018.08.017)

This is a PDF file of an unedited manuscript that has been accepted for publication. As a service to our customers we are providing this early version of the manuscript. The manuscript will undergo copyediting, typesetting, and review of the resulting proof before it is published in its final form. Please note that during the production process errors may be discovered which could affect the content, and all legal disclaimers that apply to the journal pertain.

# Association among T2 signal intensity, Necrosis, ADC and Ki-67 in Estrogen Receptor-positive and HER2-negative invasive ductal carcinoma

Soo-Yeon Kim, MD<sup>1,2</sup>, Eun-Kyung Kim, MD, PhD<sup>1</sup>, Hee Jung Moon, MD, PhD<sup>1</sup>

Jung Hyun Yoon, MD, PhD<sup>1</sup>, Ja Seung Koo, MD, PhD<sup>3</sup>, Sungheon Gene Kim<sup>4</sup>, and Min Jung  
Kim, MD, PhD<sup>1</sup>

<sup>1</sup>Department of Radiology and Research Institute of Radiological Science, Severance  
Hospital, Yonsei University College of Medicine, Seoul, Korea

<sup>2</sup>Present Address: Department of Radiology, Seoul National University Hospital, Seoul,  
Korea

<sup>3</sup>Department of Pathology, Severance Hospital, Yonsei University College of Medicine, Seoul,  
Korea

<sup>4</sup>Department of Radiology, NYU School of Medicine, 660 First Ave, New York, NY 10016,  
USA

Corresponding author: Min Jung Kim, M.D. Ph.D.

Department of Radiology and Research Institute of Radiological Science, Severance Hospital,  
Yonsei University College of Medicine, 50-1 Yonsei-ro, Seodaemun-gu, 03722 Seoul, Korea

TEL: 82-2- 2228-7400

FAX: 82-2-393-3035

E-mail: [mines@yuhs.ac](mailto:mines@yuhs.ac)

Download English Version:

<https://daneshyari.com/en/article/9953837>

Download Persian Version:

<https://daneshyari.com/article/9953837>

[Daneshyari.com](https://daneshyari.com)